



**BMW 5: 1HJJ683**

Vinnumber:	<b>WBA5J11020D336147</b>	Versionname:	<b>5 TOURING 518d 143PK</b>
First Registrationdate:	<b>1/08/2014</b>	Fiscalpower:	
Expertise Mileage:	<b>61481</b>	Power Kw:	<b>105</b>
Bodytype:	<b>Break</b>	Body color:	<b>Grey</b>
Gearbox:	<b>MAN 6 VIT</b>	Paint type:	<b>Metalic</b>
Transmission:	<b>Back</b>	Rims summer:	<b>Aluminium</b>
Fueltype:	<b>Diesel</b>	Oil level:	<b>OK</b>
Maintenance:	<b>OK</b>	Parking lot:	<b>4123</b>
Battery functioning:	<b>Yes</b>		
Number of doors:	<b>5</b>		
Number of seats:	<b>5</b>		
Number head rests:	<b>5</b>		
Rims summer:	<b>Aluminium</b>		
Category:	<b>Passenger Car</b>		
Oil level:	<b>OK</b>		
Registration Certificate Car (BE):	<b>Yes</b>		

**Options**

Radio CD		Seats electric F L	
GPS storage		Central consol F	
GPS storage	<b>HD</b>	Luggage cover	
Windows electric F		Front parking sensors	
Windows electric R		Rear parking sensors	
Cruise Control		Type of Tow bar	<b>No Tow bar</b>
Steering wheel multifunctional			
Radio multimedia			
Type of headlighting	<b>Headlighting Xenon</b>		
Type of GPS	<b>GPS big screen color</b>		
Type of Lining	<b>Lining leather</b>		
Type of climate control	<b>Autom climate control</b>		

**Limited Technical Inspection**

Airco functioning	<b>OK</b>	Battery functioning	<b>Yes</b>
Tires wear profile	<b>OK</b>	Power steering	<b>Yes</b>
Idle position	<b>OK</b>	Sound engine	<b>OK</b>
Engine startingtime	<b>OK</b>	Clutch test	<b>OK</b>
Exhaust gass	<b>OK</b>	Wiper fluid level	<b>OK</b>
Handbrake	<b>OK</b>	Transmission	<b>OK</b>
		Lighting	<b>OK</b>
		Wiperblades	<b>OK</b>

**Degree of wear**

	<b>225/55/17/97 Y LightMetal</b>			
Summer tyres:	Fr.L.	<b>Michelin: 6 mm</b>	Fr.R.	<b>Michelin: 6 mm</b>
	Re.L.	<b>Michelin: 6 mm</b>	Re.R.	<b>Michelin: 6 mm</b>

**Assistance equipment**

Repair kit	<b>Yes</b>	Compressor	<b>Yes</b>
------------	------------	------------	------------

Total cost ex VAT	<b>1305,44</b>
Alloy rim R R, Scratch(es), LI - Repair and paint (complete)	<b>95,00</b>



Wing R R, Dent(s) and scratch(es), LI - Repair and paint (complete)	<b>417,84</b>
---	---------------



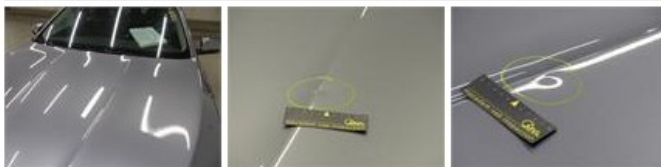
Bumper F, Scratch(es), LI - Repair and paint (complete) 254,16



Bodywork, Stain, Cleaning 0,00



Bonnet, Dent(s), PDR - Knock out without painting 63,00



Bumper R, Scratch(es), LI - Repair and paint (complete) 254,16



Internal Boot Lining R, Scratch(es), Smart repair 110,64



Rearview mirror housing R, Scratch(es), Smart repair 110,64

