


**RENAULT Kangoo Express: YGP915**

Vinnumber:	<b>VF1FC1EBF39224165</b>	Versionname:	<b>KANGOO Expr. Gr.Confort</b>
First Registrationdate:	<b>4/03/2008</b>	Fiscalpower:	<b>68PK</b>
Expertise Mileage:	<b>126044</b>	Power Kw:	<b>50</b>
Bodytype:	<b>Transporter</b>	Body color:	<b>White</b>
Gearbox:	<b>MAN 5 VIT</b>	Paint type:	<b>Metalic</b>
Transmission:		Rims summer:	<b>Steel</b>
Fueltype:	<b>Diesel</b>	Oil level:	<b>OK</b>
Battery functioning:	<b>Yes</b>	Parking lot:	<b>3433</b>
Number of doors:	<b>5</b>		
Number of seats:	<b>2</b>		
Number head rests:	<b>2</b>		
Rims summer:	<b>Steel</b>		
Category:	<b>Light Commercial Vehicle</b>		
Oil level:	<b>OK</b>		

**Options**

Radio CD		Central consol F	
Type of headlighting:	<b>Headlighting Halogen</b>	Type of Tow bar:	<b>No Tow bar</b>
Type of GPS:	<b>No GPS</b>		
Type of Lining:	<b>Lining fabrics</b>		
Type of climate control:	<b>No climate control</b>		

**Limited Technical Inspection**

Airco functioning	<b>OK</b>	Battery functioning	<b>Yes</b>
Tires wear profile	<b>OK</b>	Power steering	<b>Yes</b>
Idle position	<b>OK</b>	Sound engine	<b>OK</b>
Engine startingtime	<b>OK</b>	Clutch test	<b>OK</b>
Exhaust gass	<b>OK</b>	Wiper fluid level	<b>OK</b>
Handbrake	<b>OK</b>	Transmission	<b>OK</b>
		Lighting	<b>OK</b>
		Wiperblades	<b>OK</b>

**Degree of wear**

	<b>165/70/14/89 R Steel</b>			
Summer tyres:	Fr.L.	<b>Bridgestone: 7 mm</b>	Fr.R.	<b>Bridgestone: 7 mm</b>
	Re.L.	<b>Kleber: 4 mm</b>	Re.R.	<b>Kleber: 4 mm</b>

**Assistance equipment**

Spare wheel	<b>Yes</b>
-------------	------------

Total cost ex VAT	1254,39
-------------------	---------

Rear wiper blade, Damaged, E - Replace	20,00
--	-------

*No pictures to display*

Wing R L, Dent(s), Acceptable	0,00
-------------------------------	------

*No pictures to display*

Boot carpet, Damaged, E - Replace	75,00
-----------------------------------	-------



Wheel cover R L, Scratch(es), Acceptable	0,00
--	------

*No pictures to display*

Wheel cover F L, Scratch(es), Acceptable	0,00
--	------

No pictures to display

Bodywork, Not original part, Acceptable	0,00
---	------

No pictures to display

Wing R R, Dent(s), Acceptable	0,00
-------------------------------	------

No pictures to display

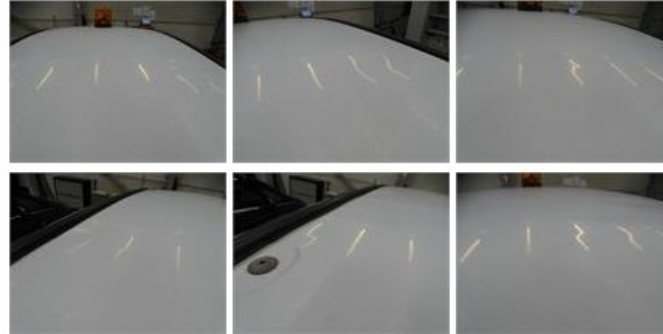
Bumper R, Scratch(es), Acceptable	0,00
-----------------------------------	------

No pictures to display

Door F L, Dent(s) and scratch(es), LI - Repair and paint (complete)	238,76
---	--------



Roof, Dent(s), LI - Repair and paint (complete)	361,13
---	--------



Floor covering F L, Damaged, E - Replace	237,00
--	--------



Backrest cover F L, Damaged, E - Replace	300,00
--	--------



Wheel cover R R, Broken, E - Replace	22,50
--------------------------------------	-------

