



VOLVO V40: 1FHM251			
Vinnumber:	<b>YV1MV8481E2084916</b>	Versionname:	<b>V40 D2 Base 115PK</b>
First Registrationdate:	<b>1/07/2013</b>	Fiscalpower:	
Expertise Mileage:	<b>102143</b>	Power Kw:	<b>84</b>
Bodytype:		Body color:	<b>Grey</b>
Gearbox:	<b>MAN 6 VIT</b>	Paint type:	<b>Metalic</b>
Transmission:		Rims summer:	<b>Aluminium</b>
Fueltype:	<b>Diesel</b>	Oil level:	<b>OK</b>
Battery functioning:	<b>Yes</b>	Parking lot:	<b>3313</b>
Number of doors:	<b>5</b>		
Number of seats:	<b>5</b>		
Number head rests:	<b>5</b>		
Rims summer:	<b>Aluminium</b>		
Category:	<b>Passenger Car</b>		
Oil level:	<b>OK</b>		

Options			
Radio CD		Central consol F	
Windows electric F		Luggage cover	
Windows electric R		Rear parking sensors	
Cruise Control		Type of Tow bar	<b>No Tow bar</b>
Steering wheel multifunctional			
Radio multimedia			
Type of headlighting	<b>Headlighting Halogen</b>		
Type of GPS	<b>GPS big screen color</b>		
Type of Lining	<b>Lining fabrics</b>		
Type of climate control	<b>Manual climate control</b>		

Limited Technical Inspection			
Airco functioning	<b>OK</b>	Battery functioning	<b>Yes</b>
Tires wear profile	<b>OK</b>	Power steering	<b>Yes</b>
Idle position	<b>OK</b>	Sound engine	<b>OK</b>
Engine startingtime	<b>OK</b>	Clutch test	<b>OK</b>
Exhaust gass	<b>OK</b>	Wiper fluid level	<b>OK</b>
Handbrake	<b>OK</b>	Transmission	<b>OK</b>
		Lighting	<b>OK</b>
		Wiperblades	<b>OK</b>

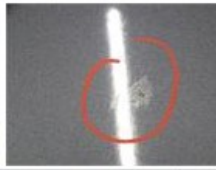
Degree of wear				
	<b>205/55/16/91 V LightMetal</b>			
Summer tyres:	Fr.L.	<b>Michelin: 8 mm</b>	Fr.R.	<b>Michelin: 8 mm</b>
	Re.L.	<b>Michelin: 7 mm</b>	Re.R.	<b>Michelin: 7 mm</b>

Assistance equipment	
Repair kit	<b>No</b>
Compressor	<b>No</b>
Total cost ex VAT	<b>2436,46</b>
Compressor, Missing, E - Replace	<b>0,00</b>
<i>No pictures to display</i>	
Tyre repair kit, Missing, E - Replace	<b>210,53</b>
<i>No pictures to display</i>	
Ignition key, Missing, E - Replace	<b>150,00</b>
<i>No pictures to display</i>	
Wing R L, Scratch(es), LI - Repair and paint (complete)	<b>308,20</b>





Bonnet, Chemical polution, LI - Repair and paint (complete) 290,08



Protection plate M, Tear, Acceptable 0,00

No pictures to display

Bumper F, Scratch(es), LI - Repair and paint (complete) 211,80



Bumper R, Scratch(es), LI - Repair and paint (complete) 211,80



Sill outer L, Scratch(es), LI - Repair and paint (complete) 310,50



Bumper R, Scratch(es), Acceptable 0,00

No pictures to display

Alloy rim F L, Scratch(es), LI - Repair and paint (complete) 95,00



Roof, Chemical polution, 67 - Polish 0,00

No pictures to display

Rear spoiler, Bad repair, Acceptable 0,00



Alloy rim R R, Scratch(es), LI - Repair and paint (complete) 95,00





Alloy rim F R, Scratch(es), E - Replace

235,20



Bodywork, Not original part, Acceptable

0,00

*No pictures to display*

Door R L, Scratch(es), LI - Repair and paint (complete)

318,35



Wing R R, Dent(s), Acceptable

0,00

*No pictures to display*