

<b>MINI 5D: 1PEP473</b>			
Vinnumber:	<b>WMWXT310X02B48909</b>	Versionname:	<b>1.5 COOPER D</b>
First Registrationdate:	<b>17/06/2016</b>	Fiscalpower:	
Expertise Mileage:	<b>58066</b>	Power Kw:	<b>85</b>
Bodytype:		Body color	<b>Blue</b>
Gearbox:	<b>MAN 6 VIT</b>	Paint type	<b>Metalic</b>
Transmission:		Rims summer	<b>Aluminium</b>
Fueltype:	<b>Diesel</b>	Oil level	<b>OK</b>
Battery functioning	<b>Yes</b>	Parking lot	<b>2709</b>
Number of doors	<b>5</b>		
Number of seats	<b>5</b>		
Number head rests	<b>5</b>		
Rims summer	<b>Aluminium</b>		
Category	<b>Passenger Car</b>		
Oil level	<b>OK</b>		
Registration Certificate Car (BE)	<b>Yes</b>		

<b>Options</b>			
Windows electric F		Luggage cover	
Windows electric R		Rear parking sensors	
Cruise Control		Type of Tow bar	<b>No Tow bar</b>
Steering wheel multifunctional			
Radio multimedia			
Type of headlighting	<b>Headlighting Halogen</b>		
Type of GPS	<b>GPS big screen color</b>		
Type of Lining	<b>Lining fabrics</b>		
Type of climate control	<b>Manual climate control</b>		

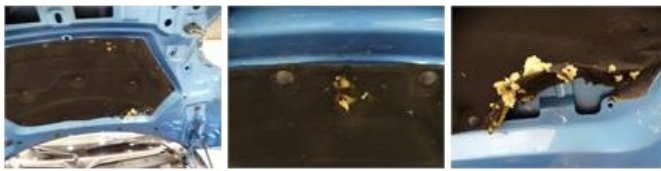
<b>Limited Technical Inspection</b>			
Airco functioning	<b>OK</b>	Battery functioning	<b>Yes</b>
Tires wear profile	<b>OK</b>	Power steering	<b>Yes</b>
Idle position	<b>OK</b>	Sound engine	<b>OK</b>
Engine startingtime	<b>OK</b>	Clutch test	<b>OK</b>
Exhaust gass	<b>OK</b>	Wiper fluid level	<b>OK</b>
Handbrake	<b>OK</b>	Transmission	<b>OK</b>
		Lighting	<b>OK</b>
		Wiperblades	<b>OK</b>

<b>Degree of wear</b>				
	<b>175/65/15/84 H LightMetal</b>			
Summer tyres:	Fr.L.	<b>Michelin: 4 mm</b>	Fr.R.	<b>Michelin: 4 mm</b>
	Re.L.	<b>Michelin: 6 mm</b>	Re.R.	<b>Michelin: 6 mm</b>

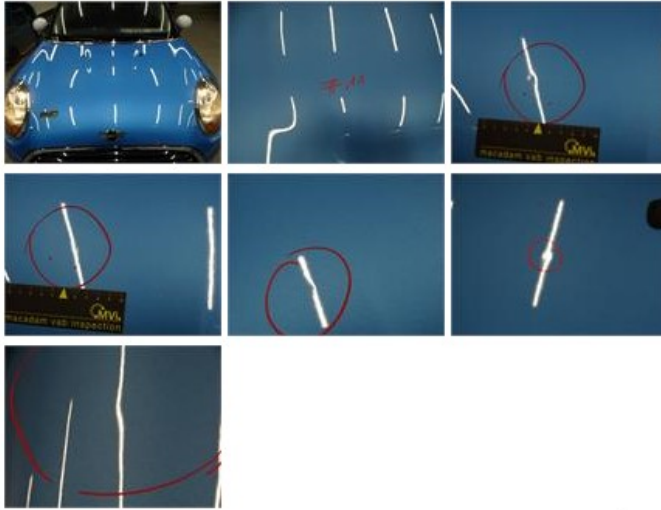
<b>Assistance equipment</b>			
Repair kit	<b>Yes</b>	Compressor	<b>Yes</b>

Total cost ex VAT	496,40
Bumper grille, Broken, E - Replace	32,40

Bumper F, Scratch(es), Acceptable	0,00
<i>No pictures to display</i>	
Protection plate M, Tear, E - Replace	74,00



Bonnet, Hail damage, PDR - Hail 0,00



Ignition key, Missing, E - Replace 150,00

No pictures to display

Luggage space cover, Missing, E - Replace 240,00



Roof, Dent(s), Acceptable 0,00

No pictures to display