



BMW 1: 1FJG070

Vinnnumber:	WBA1C91040J513063	Versionname:	1 HATCH 116d Eff.Dyn.Ed. 116PK
First Registrationdate:	15/07/2013	Fiscalpower:	
Expertise Mileage:	80494	Power Kw:	85
Bodytype:	Hatchback	Body color:	Dark Brown
Gearbox:	MAN 6 VIT	Paint type:	Metalic
Transmission:	Back	Rims summer:	Aluminium
Fueltype:	Diesel	Oil level:	OK
Battery functioning:	Yes	Parking lot:	2129
Number of doors:	5		
Number of seats:	5		
Number head rests:	5		
Rims summer:	Aluminium		
Category:	Passenger Car		
Oil level:	OK		

Options

Radio CD	Central consol F
Windows electric F	Luggage cover
Windows electric R	Rear parking sensors
Cruise Control	
Steering wheel multifunctional	
Seats F heated	
Radio multimedia	
Type of headlighting	Headlighting Halogen
Type of GPS	GPS big screen color
Type of Lining	Lining artificial leather
Type of climate control	Manual climate control

Limited Technical Inspection

Airco functioning	OK	Battery functioning	Yes
Tires wear profile	OK	Power steering	Yes
Idle position	OK	Sound engine	OK
Engine startingtime	OK	Clutch test	OK
Exhaust gass	OK	Wiper fluid level	OK
Handbrake	OK	Transmission	OK
		Lighting	OK
		Wiperblades	OK

Degree of wear

	205/55/1616/91 W LightMetal			
Summer tyres:	Fr.L.	Michelin: 3 mm	Fr.R.	Michelin: 3 mm
	Re.L.	Michelin: 3 mm	Re.R.	Michelin: 3 mm

Assistance equipment

Repair kit	Yes	Compressor	Yes
Total cost ex VAT			451,40
Wing R R, Bad repair, Acceptable			0,00



Protection plate M, Strained , E - Replace	74,00
--	--------------



Door R L, Dent(s), Acceptable 0,00

No pictures to display

Wing R R, Dent(s), Acceptable 0,00

No pictures to display

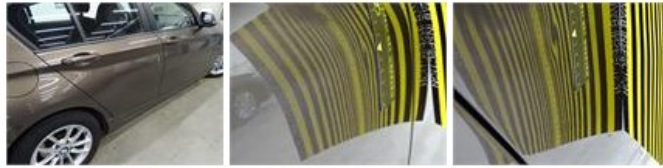
Roof, Bad repair, Acceptable 0,00



Bonnet, Bad repair, Acceptable 0,00



Door R R, Dent(s), PDR - Knock out without painting 82,80



Alloy rim R R, Scratch(es), Acceptable 0,00

No pictures to display

Bumper R, Bad repair, Acceptable 0,00



Bumper F, Scratch(es), LI - Repair and paint (complete) 211,80



Wing R L, Dent(s), PDR - Knock out without painting 82,80

