


MERCEDES C BREAK: 1JXA035

Vinnumber:	WDD2052371F164193	Versionname:	1.6 C 200 BLUETEC
First Registrationdate:	10/03/2015	Fiscalpower:	
Expertise Mileage:	122396	Power Kw:	100
Bodytype:		Body color:	Silver
Gearbox:	Automatic	Paint type:	Metalic
Transmission:	Back	Rims summer:	Aluminium
Fueltype:	Diesel	Oil level:	OK
Battery functioning:	Yes	Parking lot:	2509
Number of doors:	5		
Number of seats:	5		
Number head rests:	5		
Rims summer:	Aluminium		
Category:	Passenger Car		
Oil level:	OK		
Registration Certificate Car (BE):	Yes		

Options

Radio CD		Central consol F	
Windows electric F		Luggage cover	
Windows electric R		Front parking sensors	
Cruise Control		Rear parking sensors	
Steering wheel multifunctional		Type of Tow bar	Tow bar fixed
Seats F heated			
Radio multimedia			
Type of headlighting	Headlighting LED		
Type of GPS	GPS big screen color		
Type of Lining	Lining leather		
Type of climate control	Autom climate control		

Limited Technical Inspection

Airco functioning	OK	Battery functioning	Yes
Tires wear profile	OK	Power steering	Yes
Idle position	OK	Sound engine	OK
Engine startingtime	OK	Clutch test	OK
Exhaust gass	OK	Wiper fluid level	OK
Handbrake	OK	Transmission	OK
		Lighting	OK
		Wiperblades	OK

Degree of wear

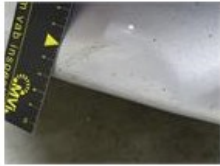
25/60/16/92 W LightMetal				
Summer tyres:	Fr.L.	Continental: 4 mm	Fr.R.	Continental: 4 mm
	Re.L.	Continental: 5 mm	Re.R.	Continental: 5 mm

Assistance equipment

Repair kit	Yes	Compressor	Yes
Total cost ex VAT			335,80
Alloy rim R L, Scratch(es), Acceptable			0,00
<i>No pictures to display</i>			
Wing R R, Dent(s), Acceptable			0,00
<i>No pictures to display</i>			
Bumper F, Stone chip(s), Acceptable			0,00
<i>No pictures to display</i>			
Wing F R, Scratch(es), Acceptable			0,00
<i>No pictures to display</i>			
Spoiler R, Damaged, E - Replace			124,00



Bumper F, Dent(s), LI - Repair and paint (complete) 211,80



Roof pillar R, Stone chip(s), Acceptable 0,00

No pictures to display