



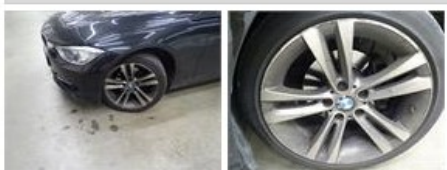
BMW 3: 1GXF965			
Vinnnumber:	<b>WBA3D11070J627310</b>	Versionname:	<b>3 BER 318d 136PK</b>
First Registrationdate:	<b>26/05/2014</b>	Fiscalpower:	
Expertise Mileage:	<b>174336</b>	Power Kw:	<b>100</b>
Bodytype:		Body color:	<b>Black</b>
Gearbox:	<b>MAN 6 VIT</b>	Paint type:	<b>Metalic</b>
Transmission:	<b>Back</b>	Rims summer:	<b>Aluminium</b>
Fueltype:	<b>Diesel</b>	Oil level:	<b>OK</b>
Battery functioning:	<b>Yes</b>	Parking lot:	<b>3831</b>
Number of doors:	<b>4</b>		
Number of seats:	<b>5</b>		
Number head rests:	<b>5</b>		
Rims summer:	<b>Aluminium</b>		
Category:	<b>Passenger Car</b>		
Oil level:	<b>OK</b>		
Registration Certificate Car (BE):	<b>Yes</b>		

Options	
Radio CD	Central consol F
Windows electric F	Rear parking sensors
Windows electric R	
Cruise Control	
Steering wheel multifunctional	
Radio multimedia	
Type of headlighting	<b>Headlighting Xenon</b>
Type of GPS	<b>GPS big screen color</b>
Type of Lining	<b>Lining leather</b>
Type of climate control	<b>Autom climate control</b>

Limited Technical Inspection			
Airco functioning	<b>OK</b>	Battery functioning	<b>Yes</b>
Tires wear profile	<b>OK</b>	Power steering	<b>Yes</b>
Idle position	<b>OK</b>	Sound engine	<b>OK</b>
Engine startingtime	<b>OK</b>	Clutch test	<b>OK</b>
Exhaust gass	<b>OK</b>	Wiper fluid level	<b>OK</b>
Handbrake	<b>OK</b>	Transmission	<b>OK</b>
		Lighting	<b>OK</b>
		Wiperblades	<b>OK</b>

Degree of wear				
	<b>225/45/19/91 V LightMetal</b>			
Summer tyres:	Fr.L.	<b>Pirelli: 3 mm</b>	Fr.R.	<b>Pirelli: 3 mm</b>
	Re.L.	<b>Pirelli: 4 mm</b>	Re.R.	<b>Pirelli: 4 mm</b>

Assistance equipment	
Total cost ex VAT	646,80
Alloy rim F L, Scratch(es), LI - Repair and paint (complete)	95,00



Alloy rim F R, Scratch(es), Acceptable	0,00
No pictures to display	
Alloy rim R L, Scratch(es), LI - Repair and paint (complete)	95,00



Ignition key, Missing, E - Replace	150,00
------------------------------------	--------

*No pictures to display*

Bumper F, Scratch(es), Acceptable	0,00
-----------------------------------	------

*No pictures to display*

Alloy rim R R, Scratch(es), LI - Repair and paint (complete)	95,00
--	-------



Bumper R, Scratch(es), LI - Repair and paint (complete)	211,80
---	--------



Door panel R R, Scratch(es), Acceptable	0,00
---	------

*No pictures to display*