



## VOLVO V60: 1HUZ483

Vinnumber:	<b>YV1FW73CDF1239866</b>	Versionname:	<b>V60 BRE D4 Kinetic Geartr.181PK Aut.</b>
First Registrationdate:	<b>9/10/2014</b>	Fiscalpower:	
Expertise Mileage:	<b>102862</b>	Power Kw:	<b>133</b>
Bodytype:	<b>Break</b>	Body color:	<b>Black</b>
Gearbox:	<b>Automatic</b>	Paint type:	<b>Metallic</b>
Transmission:	<b>Front</b>	Rims summer:	<b>Aluminium</b>
Fueltype:	<b>Diesel</b>	Oil level:	<b>OK</b>
Battery functioning:	<b>Yes</b>	Parking lot:	<b>3512</b>
Number of doors:	<b>5</b>		
Number of seats:	<b>5</b>		
Number head rests:	<b>5</b>		
Rims summer:	<b>Aluminium</b>		
Category:	<b>Passenger Car</b>		
Oil level:	<b>OK</b>		
Registration Certificate Car (BE):	<b>Yes</b>		

## Options

Radio CD		Seats electric F L	
TV/DVD screen R		Central consol F	
Windows electric F		Luggage cover	
Windows electric R		Front parking sensors	
Cruise Control		Rear parking sensors	
Steering wheel multifunctional		Type of Tow bar	<b>Tow bar fixed</b>
Seats F heated			
Radio multimedia			
Type of headlighting	<b>Headlighting Halogen</b>		
Type of GPS	<b>GPS big screen color</b>		
Type of Lining	<b>Lining leather</b>		
Type of climate control	<b>Autom climate control</b>		

## Limited Technical Inspection

Airco functioning	<b>OK</b>	Battery functioning	<b>Yes</b>
Tires wear profile	<b>OK</b>	Power steering	<b>Yes</b>
Idle position	<b>OK</b>	Sound engine	<b>OK</b>
Engine startingtime	<b>OK</b>	Clutch test	<b>OK</b>
Exhaust gass	<b>OK</b>	Wiper fluid level	<b>OK</b>
Handbrake	<b>OK</b>	Transmission	<b>OK</b>
		Lighting	<b>OK</b>
		Wiperblades	<b>OK</b>

## Degree of wear

	<b>235/45/17/97 W LightMetal</b>			
Summer tyres:	Fr.L.	<b>Pirelli: 4 mm</b>	Fr.R.	<b>Pirelli: 4 mm</b>
	Re.L.	<b>Pirelli: 4 mm</b>	Re.R.	<b>Pirelli: 4 mm</b>

## Assistance equipment

Repair kit	<b>Yes</b>	Compressor	<b>Yes</b>
------------	------------	------------	------------

Total cost ex VAT	691,88
-------------------	--------

Bumper F, Scratch(es), LI - Repair and paint (complete)	211,80
---	--------



Alloy rim R L, Scratch(es), LI - Repair and paint (complete)	95,00
--	-------



Alloy rim F R, Scratch(es), LI - Repair and paint (complete) 95,00



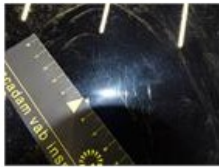
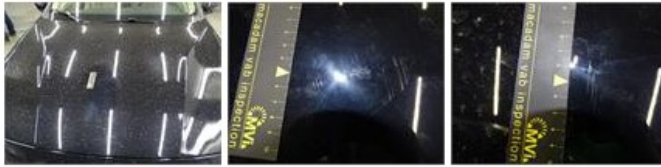
Door F R, Scratch(es), Acceptable 0,00

*No pictures to display*

Alloy rim R R, Scratch(es), Acceptable 0,00

*No pictures to display*

Bonnet, Scratch(es), LI - Repair and paint (complete) 290,08



Bumper R, Scratch(es), Acceptable 0,00

*No pictures to display*