



## VOLKSWAGEN Passat: 1GIQ646

Vinnnumber:	<b>WVWZZZ3CZEE116554</b>	Versionname:	<b>PASSAT VAR Trendline BM</b>
First Registrationdate:	<b>18/02/2014</b>	Fiscalpower:	<b>105PK</b>
Expertise Mileage:	<b>123987</b>	Power Kw:	<b>77</b>
Bodytype:	<b>Break</b>	Body color:	<b>Dark Brown</b>
Gearbox:	<b>MAN 6 VIT</b>	Paint type:	<b>Metalic</b>
Transmission:	<b>Front</b>	Rims summer:	<b>Aluminium</b>
Fueltype:	<b>Diesel</b>	Oil level:	<b>OK</b>
Battery functioning:	<b>Yes</b>	Parking lot:	<b>1214</b>
Number of doors:	<b>5</b>		
Number of seats:	<b>5</b>		
Number head rests:	<b>5</b>		
Rims summer:	<b>Aluminium</b>		
Category:	<b>Passenger Car</b>		
Oil level:	<b>OK</b>		
Registration Certificate Car (BE):	<b>Yes</b>		

## Options

Radio CD		Central consol F	
Windows electric F		Luggage cover	
Windows electric R		Front parking sensors	
Cruise Control		Rear parking sensors	
Radio multimedia		Type of Tow bar	<b>Tow bar fixed</b>
Type of headlighting	<b>Headlighting Halogen</b>		
Type of GPS	<b>GPS big screen color</b>		
Type of Lining	<b>Lining fabrics</b>		
Type of climate control	<b>Autom climate control</b>		

## Limited Technical Inspection

Airco functioning	<b>OK</b>	Battery functioning	<b>Yes</b>
Tires wear profile	<b>OK</b>	Power steering	<b>Yes</b>
Idle position	<b>OK</b>	Sound engine	<b>OK</b>
Engine startingtime	<b>OK</b>	Clutch test	<b>OK</b>
Exhaust gass	<b>OK</b>	Wiper fluid level	<b>OK</b>
Handbrake	<b>OK</b>	Transmission	<b>OK</b>
		Lighting	<b>OK</b>
		Wiperblades	<b>OK</b>

## Degree of wear

	<b>205/55/16/91 H LightMetal</b>			
Summer tyres:	Fr.L.	<b>Kleber: 3 mm</b>	Fr.R.	<b>Kleber: 3 mm</b>
	Re.L.	<b>Kleber: 5 mm</b>	Re.R.	<b>Kleber: 5 mm</b>

## Assistance equipment

Repair kit	<b>Yes</b>	Compressor	<b>Yes</b>
------------	------------	------------	------------

Total cost ex VAT	453,60
-------------------	--------

Tailgate, Dent(s), Acceptable	0,00
-------------------------------	------

*No pictures to display*

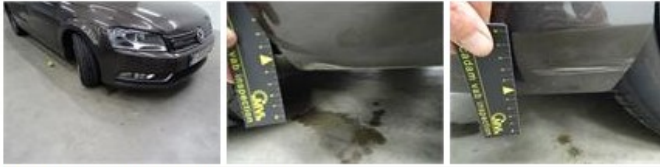
Bumper R, Dent(s) and scratch(es), LI - Repair and paint (complete)	211,80
---	--------



Bumper F, Scratch(es), LI - Repair and paint (complete)

211,80

Bumper L, Scratch(es), E - Repair and paint (complete) 211,00



Door R L, Scratch(es), Acceptable 0,00

*No pictures to display*

Wheel cover R R, Missing, E - Replace 30,00



Wing R L, Scratch(es), Acceptable 0,00

*No pictures to display*