


**BMW 1: YP5498**

Vinnumber:	<b>WBA1C11090VU92155</b>	Versionname:	<b>1 BER HATCH 118d 136PK</b>
First Registrationdate:	<b>13/12/2013</b>	Fiscalpower:	
Expertise Mileage:	<b>125910</b>	Power Kw:	<b>100</b>
Bodytype:		Body color:	<b>Grey</b>
Gearbox:	<b>MAN 6 VIT</b>	Paint type:	<b>Metalic</b>
Transmission:	<b>Back</b>	Rims summer:	<b>Steel</b>
Fueltype:	<b>Diesel</b>	Oil level:	<b>OK</b>
Maintenance:	<b>OK</b>	Parking lot:	<b>3215</b>
Battery functioning:	<b>Yes</b>		
Number of doors:	<b>5</b>		
Number of seats:	<b>5</b>		
Number head rests:	<b>5</b>		
Rims summer:	<b>Steel</b>		
Category:	<b>Passenger Car</b>		
Oil level:	<b>OK</b>		
Registration Certificate Car (BE):	<b>Yes</b>		

**Options**

Radio CD		Central consol F	
GPS storage		Luggage cover	
GPS storage	<b>HD</b>	Rear parking sensors	
Windows electric F		Type of Tow bar	<b>No Tow bar</b>
Windows electric R			
Cruise Control			
Steering wheel multifunctional			
Radio multimedia			
Type of headlighting	<b>Headlighting Halogen</b>		
Type of GPS	<b>GPS big screen color</b>		
Type of Lining	<b>Lining fabrics</b>		
Type of climate control	<b>Autom climate control</b>		

**Limited Technical Inspection**

Airco functioning	<b>OK</b>	Battery functioning	<b>Yes</b>
Tires wear profile	<b>OK</b>	Power steering	<b>Yes</b>
Idle position	<b>OK</b>	Sound engine	<b>NOT OK</b>
Engine startingtime	<b>OK</b>	Clutch test	<b>OK</b>
Exhaust gass	<b>OK</b>	Wiper fluid level	<b>OK</b>
Handbrake	<b>OK</b>	Transmission	<b>OK</b>
		Lighting	<b>OK</b>
		Wiperblades	<b>OK</b>

**Degree of wear**

	<b>195/55/16/91 V Steel</b>			
Summer tyres:	Fr.L.	<b>Michelin: 7 mm</b>	Fr.R.	<b>Michelin: 7 mm</b>
	Re.L.	<b>Michelin: 6 mm</b>	Re.R.	<b>Michelin: 6 mm</b>

**Assistance equipment**

Repair kit	<b>Yes</b>	Compressor	<b>No</b>
------------	------------	------------	-----------

Total cost ex VAT	1696,60
-------------------	---------

Wing F L, Dent(s), PDR - Paintless dent repair	82,80
------------------------------------------------	-------



Door F L, Scratch(es), Acceptable	0,00
-----------------------------------	------

*No pictures to display*

Bonnet, Dent(s), Acceptable	0,00
-----------------------------	------

*No pictures to display*

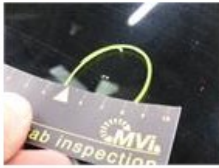
Compressor, Missing, E - Replace	100,00
----------------------------------	--------



Wing R L, Dent(s) and scratch(es), LI - Repair and paint (complete) 356,20



Windscreen, Stone chip(s), Windscreen repair 58,80



Bumper R, Dent(s) and scratch(es), LI - Repair and paint (complete) 259,80



Door F R, Dent(s), Acceptable 0,00

No pictures to display

Wheel cover R R, Scratch(es), E - Replace 30,00



Wing R R, Scratch(es), Acceptable 0,00

No pictures to display

Interior, Dirty, Acceptable 0,00



Roof, Dent(s), Acceptable 0,00

No pictures to display

Tailgate, Repaired, Acceptable 0,00

No pictures to display

Wheel cover F R, Scratch(es), E - Replace 30,00



Bumper F, Dent(s) and scratch(es), Le - Replace and paint 735,00



Headlight L, Broken, E - Replace

44,00

