


**FORD Kuga: 1GIQ504**

Vinnumber:	<b>WF0AXXWPMADD07671</b>	Versionname:	<b>KUGA 2WD Titanium</b>
First Registrationdate:	<b>18/02/2014</b>	Fiscalpower:	<b>136PK</b>
Expertise Mileage:	<b>75647</b>	Power Kw:	<b>100</b>
Bodytype:		Body color:	<b>Green</b>
Gearbox:	<b>MAN 6 VIT</b>	Paint type:	<b>Metalic</b>
Transmission:	<b>Front</b>	Rims summer:	<b>Aluminium</b>
Fueltype:	<b>Diesel</b>	Oil level:	<b>OK</b>
Battery functioning:	<b>Yes</b>	Parking lot:	<b>3531</b>
Number of doors:	<b>5</b>		
Number of seats:	<b>5</b>		
Number head rests:	<b>5</b>		
Rims summer:	<b>Aluminium</b>		
Category:	<b>Passenger Car</b>		
Oil level:	<b>OK</b>		
Registration Certificate Car (BE):	<b>Yes</b>		

**Options**

Radio CD		Central consol F
GPS storage	<b>HD</b>	Luggage cover
GPS storage		Front parking sensors
Windows electric F		Rear parking sensors
Windows electric R		
Cruise Control		
Steering wheel multifunctional		
Seats F heated		
Radio multimedia		
Type of headlighting	<b>Headlighting Halogen</b>	
Type of GPS	<b>GPS big screen color</b>	
Type of Lining	<b>Lining semi-leather</b>	
Type of climate control	<b>Autom climate control</b>	

**Limited Technical Inspection**

Airco functioning	<b>OK</b>	Battery functioning	<b>Yes</b>
Tires wear profile	<b>OK</b>	Power steering	<b>Yes</b>
Idle position	<b>OK</b>	Sound engine	<b>OK</b>
Engine startingtime	<b>OK</b>	Clutch test	<b>OK</b>
Exhaust gass	<b>OK</b>	Wiper fluid level	<b>OK</b>
Handbrake	<b>OK</b>	Transmission	<b>OK</b>
		Lighting	<b>OK</b>
		Wiperblades	<b>OK</b>

**Degree of wear**

	<b>235/50/18/101 H LightMetal</b>			
Winter tyres:	Fr.L.	<b>Michelin: 5 mm</b>	Fr.R.	<b>Michelin: 5 mm</b>
	Re.L.	<b>Michelin: 5 mm</b>	Re.R.	<b>Michelin: 5 mm</b>

**Assistance equipment**

Repair kit	<b>Yes</b>	Compressor	<b>Yes</b>
------------	------------	------------	------------

Total cost ex VAT	835,22
-------------------	--------

Bumper corner R L, Scratch(es), Smart repair	110,64
--	--------



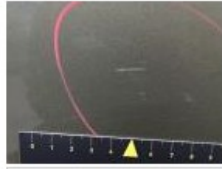
Door trim R R, Scratch(es), E - Replace	132,00
---	--------



Door F R, Dent(s) and scratch(es), LI - Repair and paint (complete) 382,02



Alloy rim F R, Scratch(es), LI - Repair and paint (complete) 95,00



Central pillar L, Scratch(es), Acceptable 0,00

*No pictures to display*

Door R L, Scratch(es), Acceptable 0,00

*No pictures to display*

Wing R L, Scratch(es), It - Spot repair 115,56



Rocker panel inner R L, Scratch(es), Acceptable 0,00

*No pictures to display*