


BMW 1 HATCH: GZ4380

Vinnumber:	WBA1V91090V739425	Versionname:	1.5 116D EFFICIENTDYNAMICS EDIT. (85KW)
First Registrationdate:	24/10/2016	Fiscalpower:	
Expertise Mileage:	22125	Power Kw:	85
Bodytype:		Body color:	Black
Gearbox:	MAN 6 VIT	Paint type:	Metalic
Transmission:	Back	Rims summer:	Aluminium
Fueltype:	Diesel	Oil level:	OK
Battery functioning:	Yes	Parking lot:	1328
Number of doors:	5		
Number of seats:	5		
Number head rests:	5		
Rims summer:	Aluminium		
Category:	Passenger Car		
Oil level:	OK		
Registration Certificate Car (BE):	No		

Options

Radio CD		Seats electric F L
GPS storage	HD	Seats electric F R
GPS storage		Central consol F
Windows electric F		Luggage cover
Windows electric R		Rear parking sensors
Cruise Control		
Steering wheel multifunctional		
Radio multimedia		
Type of headlighting	Headlighting LED	
Type of GPS	GPS big screen color	
Type of Lining	Lining fabrics	
Type of climate control	Autom climate control	

Limited Technical Inspection

Airco functioning	OK	Battery functioning	Yes
Tires wear profile	OK	Power steering	Yes
Idle position	OK	Sound engine	OK
Engine startingtime	OK	Clutch test	OK
Exhaust gass	OK	Wiper fluid level	OK
Handbrake	OK	Transmission	OK
		Lighting	OK
		Wiperblades	OK

Degree of wear

	205/50/17/89 W LightMetal			
Summer tyres:	Fr.L.	Bridgestone: 6 mm	Fr.R.	Bridgestone: 6 mm
	Re.L.	Bridgestone: 6 mm	Re.R.	Bridgestone: 6 mm

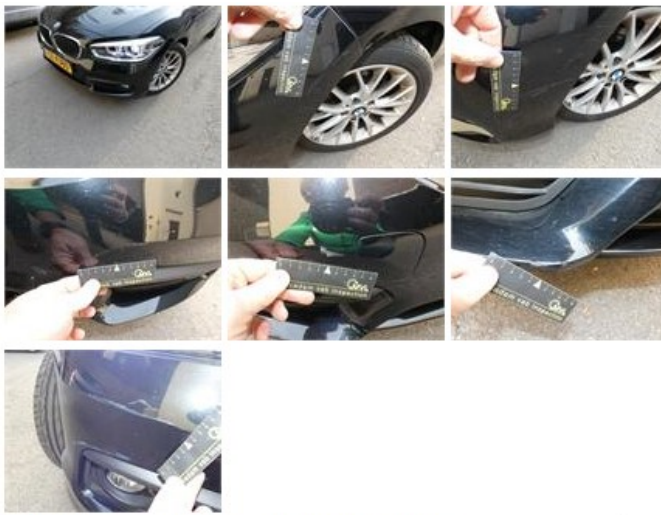
Assistance equipment

 Runflat **Yes**

Total cost ex VAT	1007,96
Certificate Of Conformity, Missing, Acceptable	0,00



Roof, Dent(s), Acceptable	0,00
<i>No pictures to display</i>	
Bumper F, Scratch(es), LI - Repair and paint (complete)	211,80



Wing F R, Scratch(es), LI - Repair and paint (complete) 220,18



Wing F L, Dent(s), LI - Repair and paint (complete) 316,18



Door R R, Scratch(es), Acceptable 0,00

No pictures to display

Door R L, Scratch(es), Acceptable 0,00

No pictures to display

Bumper R, Dent(s) and scratch(es), LI - Repair and paint (complete) 259,80



Door F R, Scratch(es), Acceptable 0,00

No pictures to display