



| | | | |
|------------------------------------|---------------------------------|--------------|-------------------------------|
| IVECO Daily 40C15: 1DLI469 | | | |
| Vinnnumber: | ZCFC40A5005908839 | Versionname: | DAILY PU2C 40C15 146PK |
| First Registrationdate: | 15/06/2012 | Fiscalpower: | 3500KG |
| Expertise Mileage: | 217195 | Power Kw: | 107 |
| Bodytype: | | Body color: | White |
| Gearbox: | MAN 6 VIT | Paint type: | Opaque |
| Transmission: | Back | Rims summer: | Steel |
| Fueltype: | Diesel | Oil level: | OK |
| Battery functioning: | Yes | Parking lot: | LCV19 |
| Number of doors: | 4 | | |
| Number of seats: | 6 | | |
| Number head rests: | 6 | | |
| Rims summer: | Steel | | |
| Category: | Light Commercial Vehicle | | |
| Oil level: | OK | | |
| Registration Certificate Car (BE): | Yes | | |

| | | | |
|----------------------|-----------------------------|------------------|----------------------|
| Options | | | |
| Radio CD | | Central consol F | |
| Windows electric F | | Type of Tow bar | Tow bar fixed |
| Type of headlighting | Headlighting Halogen | | |
| Type of Lining | Lining fabrics | | |

| | | | |
|-------------------------------------|-----------|---------------------|---------------|
| Limited Technical Inspection | | | |
| Tires wear profile | OK | Battery functioning | Yes |
| Idle position | OK | Power steering | Yes |
| Engine startingtime | OK | Sound engine | OK |
| Exhaust gass | OK | Clutch test | OK |
| Handbrake | OK | Wiper fluid level | OK |
| | | Transmission | OK |
| | | Lighting | NOT OK |
| | | Wiperblades | OK |

| | | | | |
|-----------------------|------------------------------|--------------------------|-------|--------------------------|
| Degree of wear | | | | |
| | 195/75/16/105 R Steel | | | |
| Summer tyres: | Fr.L. | Uniroyal: 7 mm | Fr.R. | Uniroyal: 7 mm |
| | Re.L. | Continental: 5 mm | Re.R. | Continental: 5 mm |

| | | | |
|-----------------------------------|-----------|------|----------------|
| Assistance equipment | | | |
| Spare wheel | No | Jack | Yes |
| Total cost ex VAT | | | 1571,65 |
| Door R R, Dent(s), Acceptable | | | 0,00 |
| <i>No pictures to display</i> | | | |
| Sill outer L, Dent(s), Acceptable | | | 0,00 |
| <i>No pictures to display</i> | | | |
| Interior, Stain, Forfeit | | | 100,00 |





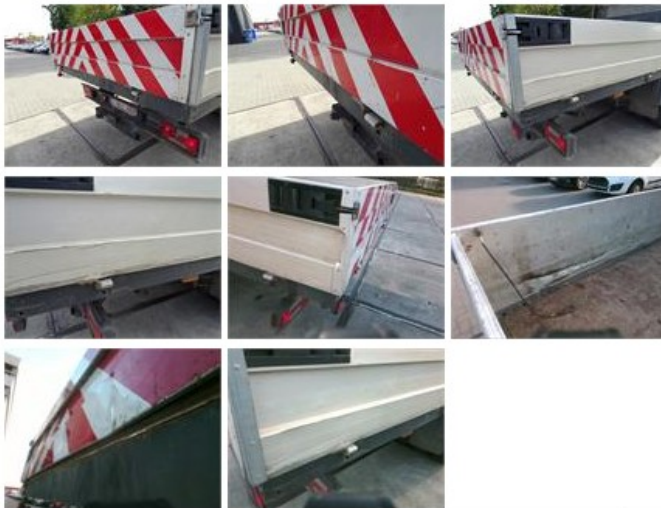
Wing moulding F R, Broken, Le - Replace and paint 75,00



Rocker panel inner F L, Scratch(es), Acceptable 0,00

No pictures to display

Tailgate, Dent(s) and scratch(es), Forfeit 500,00



Floor covering F L, Worn, Acceptable 0,00

No pictures to display

Wing R L, Dent(s) and scratch(es), LI - Repair and paint (partial) 139,00



Towhook, Missing, E - Replace 99,00



Wing F R, Scratch(es), LI - Repair and paint (complete) 165,13



| | |
|--|------|
| Rearview mirror housing L, Scratch(es), Acceptable | 0,00 |
|--|------|

No pictures to display

| | |
|---|--------|
| Sill outer R, Dent(s) and scratch(es), LI - Repair and paint (complete) | 232,88 |
|---|--------|



| | |
|-----------------------------|------|
| Dashboard, Hole, Acceptable | 0,00 |
|-----------------------------|------|

No pictures to display

| | |
|---------------------------------------|--------|
| Bumper F L, Scratch(es), Smart repair | 110,64 |
|---------------------------------------|--------|



| | |
|------------------------------------|--------|
| Ignition key, Missing, E - Replace | 150,00 |
|------------------------------------|--------|



| | |
|----------------------------------|------|
| Seat cover F L, Worn, Acceptable | 0,00 |
|----------------------------------|------|

No pictures to display