



**VOLKSWAGEN Golf: 1FRV695**

Vinnnumber:	<b>WVWZZZAUZEP505661</b>	Versionname:	<b>GOLF VAR Trendline 105PK</b>
First Registrationdate:	<b>4/10/2013</b>	Fiscalpower:	
Expertise Mileage:	<b>71259</b>	Power Kw:	<b>77</b>
Bodytype:	<b>Break</b>	Body color:	<b>Black</b>
Gearbox:	<b>MAN 5 VIT</b>	Paint type:	<b>Metalic</b>
Transmission:	<b>Front</b>	Rims summer:	<b>Aluminium</b>
Fueltype:	<b>Diesel</b>	Oil level:	<b>OK</b>
Battery functioning:	<b>Yes</b>	Parking lot:	<b>2713</b>
Number of doors:	<b>5</b>		
Number of seats:	<b>5</b>		
Number head rests:	<b>5</b>		
Rims summer:	<b>Aluminium</b>		
Category:	<b>Passenger Car</b>		
Oil level:	<b>OK</b>		
Registration Certificate Car (BE):	<b>Yes</b>		

**Options**

Windows electric F	Central consol F
Windows electric R	Luggage cover
Cruise Control	Front parking sensors
Steering wheel multifunctional	Rear parking sensors
Radio multimedia	
Type of headlighting:	<b>Headlighting Halogen</b>
Type of GPS:	<b>GPS big screen color</b>
Type of Lining:	<b>Lining fabrics</b>
Type of climate control:	<b>Autom climate control</b>
Adaptive cruise control	

**Limited Technical Inspection**

Airco functioning	<b>OK</b>	Battery functioning	<b>Yes</b>
Tires wear profile	<b>OK</b>	Power steering	<b>Yes</b>
Idle position	<b>OK</b>	Sound engine	<b>OK</b>
Engine startingtime	<b>OK</b>	Clutch test	<b>OK</b>
Exhaust gass	<b>OK</b>	Wiper fluid level	<b>OK</b>
Handbrake	<b>OK</b>	Transmission	<b>OK</b>
		Lighting	<b>OK</b>
		Wiperblades	<b>OK</b>

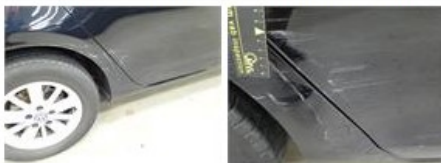
**Degree of wear**

	<b>195/65/15/91 H LightMetal</b>			
Summer tyres:	Fr.L.	<b>Michelin: 4 mm</b>	Fr.R.	<b>Michelin: 4 mm</b>
	Re.L.	<b>Michelin: 5 mm</b>	Re.R.	<b>Michelin: 5 mm</b>

**Assistance equipment**

Emergency spare wheel	<b>Yes</b>	Jack	<b>Yes</b>
-----------------------	------------	------	------------

Total cost ex VAT	<b>1929,73</b>
Door R L, Scratch(es), Acceptable	<b>0,00</b>
<i>No pictures to display</i>	
Door R R, Scratch(es), LI - Repair and paint (complete)	<b>318,35</b>



Wing R L, Dent(s) and scratch(es), LI - Repair and paint (complete)	<b>308,20</b>
---	---------------



Roof, Chemical polution, LI - Repair and paint (complete) 481,50



Wing R R, Scratch(es), LI - Repair and paint (complete) 308,20



Tailgate, Scratch(es), LI - Repair and paint (complete) 301,68



Bumper R, Scratch(es), LI - Repair and paint (complete) 211,80

