



MERCEDES B: 1FOP075			
Vinnumber:	WDD2462121J202596	Versionname:	B 180 CDI BE 109PK
First Registrationdate:	9/09/2013	Fiscalpower:	
Expertise Mileage:	62044	Power Kw:	80
Bodytype:		Body color	Black
Gearbox:	MAN 6 VIT	Paint type	Metalic
Transmission:	Front	Rims summer	Aluminium
Fueltype:	Diesel	Oil level	OK
Maintenance	OK	Parking lot	2127
Battery functioning	Yes		
Number of doors	5		
Number of seats	5		
Number head rests	5		
Rims summer	Aluminium		
Category	Passenger Car		
Oil level	OK		
Registration Certificate Car (BE)	Yes		

Options			
Radio CD		Central consol F	
GPS storage	HD	Luggage cover	
GPS storage		Front parking sensors	
Windows electric F		Rear parking sensors	
Windows electric R		Type of Tow bar	Tow bar fixed
Steering wheel multifunctional			
Type of headlighting	Headlighting Halogen		
Type of GPS	GPS big screen color		
Type of Lining	Lining fabrics		
Type of climate control	Manual climate control		

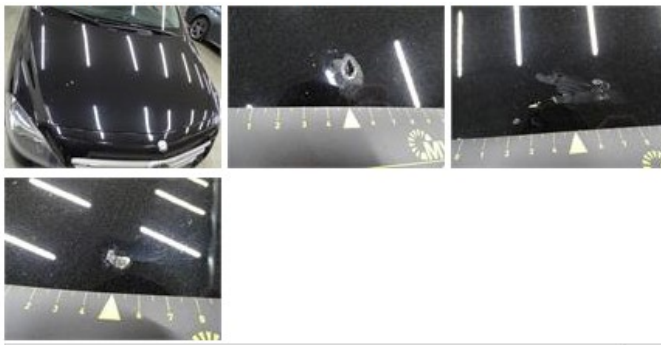
Limited Technical Inspection			
Airco functioning	OK	Battery functioning	Yes
Tires wear profile	OK	Power steering	Yes
Idle position	OK	Sound engine	OK
Engine startingtime	OK	Clutch test	OK
Exhaust gass	OK	Wiper fluid level	OK
Handbrake	OK	Transmission	OK
		Lighting	OK
		Wiperblades	OK

Degree of wear				
	205/55/16/91 H LightMetal			
Summer tyres:	Fr.L.	Continental: 8 mm	Fr.R.	Continental: 8 mm
	Re.L.	Michelin: 5 mm	Re.R.	Michelin: 5 mm

Assistance equipment			
Repair kit	Yes	Compressor	Yes
Total cost ex VAT			712,44
Bumper F, Scratch(es), Acceptable			0,00
<i>No pictures to display</i>			
Alloy rim R R, Scratch(es), Acceptable			0,00
<i>No pictures to display</i>			
Alloy rim F L, Scratch(es), LI - Repair and paint (complete)			95,00



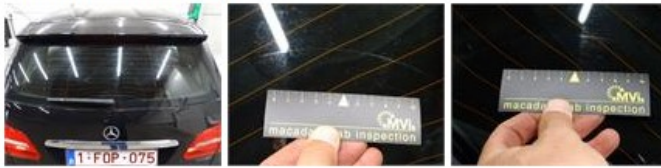
Bonnet, Chemical polution, LI - Repair and paint (complete)	290,08
--	---------------



Bumper R, Scratch(es), LI - Repair and paint (complete) 211,80



Rear window, Scratch(es), E - Replace 0,00



Rearview mirror housing L, Scratch(es), LI - Repair and paint (complete) 115,56

