



VOLVO V60: 1HJK322			
Vinnnumber:	YV1FW73C1F1222018	Versionname:	V60 BRE D4 Kinetic 181PK
First Registrationdate:	1/08/2014	Fiscalpower:	
Expertise Mileage:	151821	Power Kw:	133
Bodytype:	Break	Body color:	Black
Gearbox:	MAN 6 VIT	Paint type:	Metalic
Transmission:	Front	Rims summer:	Aluminium
Fueltype:	Diesel	Oil level:	OK
Battery functioning:	Yes	Parking lot:	4114
Number of doors:	5		
Number of seats:	5		
Number head rests:	5		
Rims summer:	Aluminium		
Category:	Passenger Car		
Oil level:	OK		
Registration Certificate Car (BE):	Yes		

Options			
Radio CD		Sun Roof electric	
GPS storage		Central consol F	
GPS storage	HD	Luggage cover	
Windows electric F		Rear parking sensors	
Windows electric R		Type of Tow bar	Tow bar fixed
Cruise Control			
Steering wheel multifunctional			
Seats F heated			
Type of headlighting	Headlighting Xenon		
Type of GPS	GPS big screen color		
Type of Lining	Lining fabrics		
Type of climate control	Autom climate control		

Limited Technical Inspection			
Airco functioning	OK	Battery functioning	Yes
Tires wear profile	OK	Power steering	Yes
Idle position	OK	Sound engine	OK
Engine startingtime	OK	Clutch test	OK
Exhaust gass	OK	Wiper fluid level	OK
Handbrake	OK	Transmission	OK
		Lighting	OK
		Wiperblades	OK

Degree of wear				
	235/45/17/94 Y LightMetal			
Summer tyres:	Fr.L.	Kleber: 4 mm	Fr.R.	Kleber: 4 mm
	Re.L.	Michelin: 5 mm	Re.R.	Michelin: 5 mm

Assistance equipment			
Repair kit	Yes	Compressor	Yes
Total cost ex VAT			1197,00
Interior, Stain, Cleaning			25,00



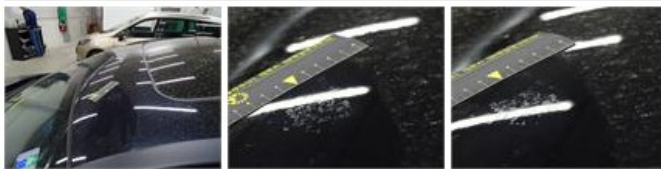
Alloy rim R L, Scratch(es), LI - Repair and paint (complete)	95,00
--	--------------



Alloy rim F L, Scratch(es), LI - Repair and paint (complete) 95,00



Roof, Chemical pollution, LI - Repair and paint (complete) 481,50



Alloy rim R R, Scratch(es), LI - Repair and paint (complete) 95,00



Bumper R, Scratch(es), Acceptable 0,00

No pictures to display

Sill outer R, Scratch(es), LI - Repair and paint (complete) 310,50



Alloy rim F R, Scratch(es), LI - Repair and paint (complete) 95,00

