



**AUDI A4: 1HKA227**

|                                    |                          |              |                  |
|------------------------------------|--------------------------|--------------|------------------|
| Vinnumber:                         | <b>WAUZZZ8K8FN008542</b> | Versionname: |                  |
| First Registrationdate:            | <b>6/08/2014</b>         | Fiscalpower: |                  |
| Expertise Mileage:                 | <b>171663</b>            | Power Kw:    | <b>100</b>       |
| Bodytype:                          |                          | Body color:  | <b>Grey</b>      |
| Gearbox:                           | <b>MAN 6 VIT</b>         | Paint type:  | <b>Metalic</b>   |
| Transmission:                      |                          | Rims summer: | <b>Aluminium</b> |
| Fueltype:                          | <b>Diesel</b>            | Oil level:   | <b>OK</b>        |
| Battery functioning:               | <b>Yes</b>               | Parking lot: | <b>2404</b>      |
| Number of doors:                   | <b>4</b>                 |              |                  |
| Number of seats:                   | <b>5</b>                 |              |                  |
| Number head rests:                 | <b>5</b>                 |              |                  |
| Rims summer:                       | <b>Aluminium</b>         |              |                  |
| Category:                          | <b>Passenger Car</b>     |              |                  |
| Oil level:                         | <b>OK</b>                |              |                  |
| Registration Certificate Car (BE): | <b>Yes</b>               |              |                  |

**Options**

|                                |                              |
|--------------------------------|------------------------------|
| Radio CD                       | Central consol F             |
| Windows electric F             | Rear parking sensors         |
| Windows electric R             | Type of Tow bar              |
| Cruise Control                 | <b>No Tow bar</b>            |
| Steering wheel multifunctional |                              |
| Radio multimedia               |                              |
| Type of headlighting           | <b>Headlighting Halogen</b>  |
| Type of GPS                    | <b>GPS big screen color</b>  |
| Type of Lining                 | <b>Lining fabrics</b>        |
| Type of climate control        | <b>Autom climate control</b> |

**Limited Technical Inspection**

|                     |           |                     |            |
|---------------------|-----------|---------------------|------------|
| Airco functioning   | <b>OK</b> | Battery functioning | <b>Yes</b> |
| Tires wear profile  | <b>OK</b> | Power steering      | <b>Yes</b> |
| Idle position       | <b>OK</b> | Sound engine        | <b>OK</b>  |
| Engine startingtime | <b>OK</b> | Clutch test         | <b>OK</b>  |
| Exhaust gass        | <b>OK</b> | Wiper fluid level   | <b>OK</b>  |
| Handbrake           | <b>OK</b> | Transmission        | <b>OK</b>  |
|                     |           | Lighting            | <b>OK</b>  |
|                     |           | Wiperblades         | <b>OK</b>  |

**Degree of wear**

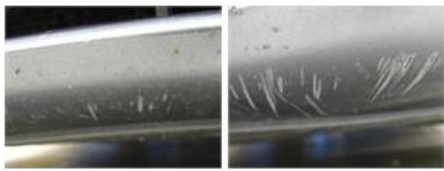
|               |                                  |                       |       |                       |
|---------------|----------------------------------|-----------------------|-------|-----------------------|
|               | <b>205/60/16/96 V LightMetal</b> |                       |       |                       |
| Summer tyres: | Fr.L.                            | <b>Uniroyal: 3 mm</b> | Fr.R. | <b>Uniroyal: 3 mm</b> |
|               | Re.L.                            | <b>Michelin: 4 mm</b> | Re.R. | <b>Michelin: 4 mm</b> |

**Assistance equipment**

|                       |            |
|-----------------------|------------|
| Emergency spare wheel | <b>Yes</b> |
|-----------------------|------------|

|   |               |
|---|---------------|
| Total cost ex VAT   | <b>695,98</b> |
| Bumper F, Dent(s) and scratch(es), LI - Repair and paint (complete) | <b>211,80</b> |





Wing F R, Dent(s) and scratch(es), LI - Repair and paint (complete) 220,18



Tailgate, Dent(s), Acceptable 0,00

No pictures to display

Alloy rim R R, Scratch(es), LI - Repair and paint (complete) 95,00



Bonnet, Dent(s), Acceptable 0,00

No pictures to display

Bumper R, Scratch(es), Acceptable 0,00

No pictures to display

Alloy rim F R, Scratch(es), LI - Repair and paint (complete) 95,00



Protection plate M, Tear, E - Replace 74,00



Roof, Chemical pollution, 67 - Polish 0,00

No pictures to display

Windscreen, Stone chip(s), Acceptable 0,00

No pictures to display

Rocker panel inner F L, Scratch(es), Acceptable 0,00

No pictures to display