



LU Mercedes gla: GZ4688

| | | | |
|------------------------------------|--------------------------|--------------|------------------------|
| Vinnumber: | WDC1569081J301759 | Versionname: | GLA 200 d Style |
| First Registrationdate: | 4/10/2016 | Fiscalpower: | |
| Expertise Mileage: | 53525 | Power Kw: | 100 |
| Bodytype: | | Body color: | Blue |
| Gearbox: | MAN 6 VIT | Body color: | BLEU |
| Transmission: | Front | Paint type: | Metalic |
| Fueltype: | Diesel | Rims summer: | Aluminium |
| Battery functioning: | Yes | Oil level: | OK |
| Number of doors: | 5 | Parking lot: | 1431 |
| Number of seats: | 5 | | |
| Number head rests: | 5 | | |
| Rims summer: | Aluminium | | |
| Category: | Passenger Car | | |
| Oil level: | OK | | |
| Registration Certificate Car (BE): | Yes | | |

Options

| | | | |
|--------------------------------|------------------------------|-----------------------|--|
| Radio CD | | Central consol F | |
| GPS storage | SD | Luggage cover | |
| GPS storage | | Front parking sensors | |
| Windows electric F | | Rear parking sensors | |
| Windows electric R | | | |
| Cruise Control | | | |
| Steering wheel multifunctional | | | |
| Seats F heated | | | |
| Radio multimedia | | | |
| Type of headlighting | Headlighting Xenon | | |
| Type of GPS | GPS big screen color | | |
| Type of Lining | Lining leather | | |
| Type of climate control | Autom climate control | | |
| Level control | | | |

Limited Technical Inspection

| | | | |
|---------------------|-----------|---------------------|------------|
| Airco functioning | OK | Battery functioning | Yes |
| Tires wear profile | OK | Power steering | Yes |
| Idle position | OK | Sound engine | OK |
| Engine startingtime | OK | Clutch test | OK |
| Exhaust gass | OK | Wiper fluid level | OK |
| Handbrake | OK | Transmission | OK |
| | | Lighting | OK |
| | | Wiperblades | OK |

Degree of wear

| | | | | |
|----------------------------------|-------|-----------------------|-------|-----------------------|
| 215/60/17/96 V LightMetal | | | | |
| Summer tyres: | Fr.L. | Michelin: 4 mm | Fr.R. | Michelin: 4 mm |
| | Re.L. | Michelin: 4 mm | Re.R. | Michelin: 4 mm |

Assistance equipment

| | | | |
|------------|------------|------------|------------|
| Repair kit | Yes | Compressor | Yes |
|------------|------------|------------|------------|

| | |
|-------------------|---------------|
| Total cost ex VAT | 115,56 |
|-------------------|---------------|

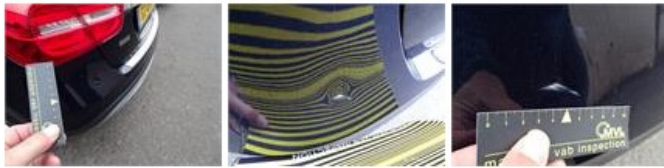
| | |
|--|-------------|
| Alloy rim R R, Scratch(es), Acceptable | 0,00 |
|--|-------------|

No pictures to display

| | |
|--|-------------|
| Bumper moulding R, Scratch(es), Acceptable | 0,00 |
|--|-------------|



| | |
|-------------------------------------|--------|
| Door F R, Scratch(es), Acceptable | 0,00 |
| <i>No pictures to display</i> | |
| Wing R R, Scratch(es), Acceptable | 0,00 |
| <i>No pictures to display</i> | |
| Door F L, Scratch(es), Acceptable | 0,00 |
| <i>No pictures to display</i> | |
| Bonnet, Stone chip(s), Acceptable | 0,00 |
| <i>No pictures to display</i> | |
| Bumper R, Dent(s), It - Spot repair | 115,56 |



| | |
|---|------|
| Bumper F, Stone chip(s), Acceptable | 0,00 |
| <i>No pictures to display</i> | |
| Door R L, Scratch(es), Acceptable | 0,00 |
| <i>No pictures to display</i> | |
| Interior, Dirty, Acceptable | 0,00 |
| <i>No pictures to display</i> | |
| Door R R, Scratch(es), Acceptable | 0,00 |
| <i>No pictures to display</i> | |
| Rocker panel inner R L, Scratch(es), Acceptable | 0,00 |
| <i>No pictures to display</i> | |
| Certificate Of Conformity, Missing, E - Replace | 0,00 |
| <i>No pictures to display</i> | |