



RENAULT Kangoo Express: 1EPN757

Vinnumber:	VF1FW14BD48611523	Versionname:	KANGOO Expr. B/F PLC Gr.Conf.(EU5)75PK
First Registrationdate:	15/02/2013	Fiscalpower:	
Expertise Mileage:	18650	Power Kw:	55
Bodytype:	Transporter	Body color:	Grey
Gearbox:	MAN 5 VIT	Paint type:	Metalic
Transmission:	Front	Rims summer:	Steel
Fueltype:	Diesel	Oil level:	OK
Battery functioning:	Yes	Parking lot:	2233
Number of doors:	5		
Number of seats:	2		
Number head rests:	2		
Rims summer:	Steel		
Category:	Light Commercial Vehicle		
Oil level:	OK		

Options

Radio CD		Rear parking sensors	
Windows electric F		Type of Tow bar	Tow bar fixed
Type of headlighting	Headlighting Halogen		
Type of GPS	No GPS		
Type of Lining	Lining fabrics		
Type of climate control	Manual climate control		

Limited Technical Inspection

Airco functioning	OK	Battery functioning	Yes
Tires wear profile	OK	Power steering	Yes
Idle position	OK	Sound engine	OK
Engine startingtime	OK	Clutch test	OK
Exhaust gass	OK	Wiper fluid level	OK
Handbrake	OK	Transmission	OK
		Lighting	OK
		Wiperblades	OK

Degree of wear

195/65/15/91 T Steel				
Summer tyres:	Fr.L.	Michelin: 4 mm	Fr.R.	Michelin: 4 mm
	Re.L.	Michelin: 5 mm	Re.R.	Michelin: 5 mm

Assistance equipment

Emergency spare wheel	Yes	Jack	Yes
-----------------------	------------	------	------------

Total cost ex VAT 1562,93

Bodywork, Not original part, Acceptable 0,00

No pictures to display

Roof, Dent(s), PDR - Paintless dent repair 82,80



Sliding door R, Dent(s) and scratch(es), LI - Repair and paint (complete) 382,02



Door F R, Dent(s), PDR - Paintless dent repair

63,00



Bumper R, Scratch(es), Acceptable

0,00

No pictures to display

Backrest cover F L, Hole, Smart repair

64,32



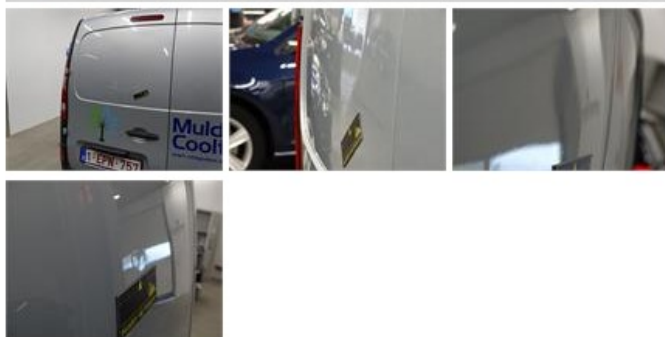
Bumper F, Scratch(es), Smart repair

110,64



Trunk door R L, Dent(s), It - Spot repair

115,56



Bonnet, Dent(s), LI - Repair and paint (complete)

217,56



Wing R R, Scratch(es), LI - Repair and paint (complete)

231,15



Wing F L, Scratch(es), Acceptable

0,00

No pictures to display

Wing F R, Scratch(es), Acceptable

0,00

No pictures to display

Wing R L, Dent(s), PDR - Paintless dent repair

63,00



Sill outer R, Dent(s), LI - Repair and paint (complete) 232,88

