



**AUDI A1 SPORTBACK: 1PXP100**

Vinnumber:	<b>WAUZZZ8X7HB031620</b>	Versionname:	<b>1.4 TDI 66kW</b>
First Registrationdate:	<b>6/10/2016</b>	Fiscalpower:	
Expertise Mileage:	<b>59550</b>	Power Kw:	<b>66</b>
Bodytype:	<b>Hatchback</b>	Body color:	<b>Dark Blue</b>
Gearbox:	<b>MAN 5 VIT</b>	Paint type:	<b>Metalic</b>
Transmission:	<b>Front</b>	Rims summer:	<b>Aluminium</b>
Fueltype:	<b>Diesel</b>	Oil level:	<b>OK</b>
Maintenance:	<b>OK</b>	Parking lot:	<b>2129</b>
Battery functioning:	<b>Yes</b>		
Number of doors:	<b>5</b>		
Number of seats:	<b>5</b>		
Number head rests:	<b>5</b>		
Rims summer:	<b>Aluminium</b>		
Category:	<b>Passenger Car</b>		
Oil level:	<b>OK</b>		
Registration Certificate Car (BE):	<b>Yes</b>		

**Options**

Radio CD		Luggage cover	
GPS storage		Rear parking sensors	
GPS storage	<b>SD</b>	Type of Tow bar	<b>No Tow bar</b>
Windows electric F			
Windows electric R			
Cruise Control			
Steering wheel multifunctional			
Radio multimedia			
Type of headlighting	<b>Headlighting Halogen</b>		
Type of GPS	<b>GPS big screen color</b>		
Type of Lining	<b>Lining fabrics</b>		
Type of climate control	<b>Autom climate control</b>		

**Limited Technical Inspection**

Airco functioning	<b>OK</b>	Battery functioning	<b>Yes</b>
Tires wear profile	<b>OK</b>	Power steering	<b>Yes</b>
Idle position	<b>OK</b>	Sound engine	<b>OK</b>
Engine startingtime	<b>OK</b>	Clutch test	<b>OK</b>
Exhaust gass	<b>OK</b>	Wiper fluid level	<b>OK</b>
Handbrake	<b>OK</b>	Transmission	<b>OK</b>
		Lighting	<b>OK</b>
		Wiperblades	<b>OK</b>

**Degree of wear**

<b>185/60/15/84 H LightMetal</b>				
Summer tyres:	Fr.L.	<b>Continental: 3 mm</b>	Fr.R.	<b>Continental: 4 mm</b>
	Re.L.	<b>Continental: 5 mm</b>	Re.R.	<b>Continental: 5 mm</b>

**Assistance equipment**

Repair kit	<b>Yes</b>	Compressor	<b>Yes</b>
------------	------------	------------	------------

Total cost ex VAT	<b>1666,70</b>
-------------------	----------------

Windscreen, Stone chip(s), Windscreen repair	<b>58,80</b>
--	--------------



Bumper R, Scratch(es), LI - Repair and paint (complete)

169,44



Sill outer L, Dent(s), LI - Repair and paint (complete)

344,40



Alloy rim F L, Scratch(es), LI - Repair and paint (complete)

95,00



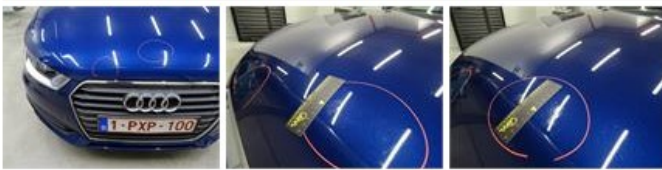
Headlight R, Scratch(es), E - Replace

336,00



Bonnet, Chemical polution, LI - Repair and paint (complete)

232,06



Headlight L, Broken, E - Replace

336,00



Alloy rim F R, Scratch(es), LI - Repair and paint (complete)

95,00





Bumper F R, Scratch(es), Acceptable	0,00
<i>No pictures to display</i>	
Roof, Scratch(es), Acceptable	0,00
<i>No pictures to display</i>	
Outer door handle F L, Scratch(es), Acceptable	0,00
<i>No pictures to display</i>	
Roof, Dent(s) and scratch(es), Acceptable	0,00
<i>No pictures to display</i>	