



**VOLVO XC60: 1KAZ139**

Vinnumber:	<b>YV1DZ73C1F2748652</b>	Versionname:	<b>2.0 D4 2WD 133KW MOMENTUM</b>
First Registrationdate:	<b>23/03/2015</b>	Fiscalpower:	
Expertise Mileage:	<b>162046</b>	Power Kw:	<b>133</b>
Bodytype:	<b>SUV</b>	Body color:	<b>Dark Grey</b>
Gearbox:	<b>MAN 6 VIT</b>	Paint type:	<b>Metallic</b>
Transmission:	<b>Front</b>	Rims summer:	<b>Aluminium</b>
Fueltype:	<b>Diesel</b>	Oil level:	<b>OK</b>
Battery functioning:	<b>Yes</b>	Parking lot:	<b>3207</b>
Number of doors:	<b>5</b>		
Number of seats:	<b>5</b>		
Number head rests:	<b>5</b>		
Rims summer:	<b>Aluminium</b>		
Category:	<b>Passenger Car</b>		
Oil level:	<b>OK</b>		
Registration Certificate Car (BE):	<b>Yes</b>		

**Options**

Radio CD		Seats electric F L	
Windows electric F		Seats electric F R	
Windows electric R		Central consol F	
Cruise Control		Luggage cover	
Steering wheel multifunctional		Rear parking sensors	
Radio multimedia		Type of Tow bar	<b>Tow bar fixed</b>
Type of headlighting	<b>Headlighting Halogen</b>		
Type of GPS	<b>GPS big screen color</b>		
Type of Lining	<b>Lining leather</b>		
Type of climate control	<b>Autom climate control</b>		

**Limited Technical Inspection**

Airco functioning	<b>OK</b>	Battery functioning	<b>Yes</b>
Tires wear profile	<b>OK</b>	Power steering	<b>Yes</b>
Idle position	<b>OK</b>	Sound engine	<b>OK</b>
Engine startingtime	<b>OK</b>	Clutch test	<b>OK</b>
Exhaust gass	<b>OK</b>	Wiper fluid level	<b>OK</b>
Handbrake	<b>OK</b>	Transmission	<b>OK</b>
		Lighting	<b>OK</b>
		Wiperblades	<b>OK</b>

**Degree of wear**

<b>235/65/17/104 V LightMetal</b>			
Summer tyres:	Fr.L. <b>Bridgestone: 3 mm</b>	Fr.R. <b>Bridgestone: 3 mm</b>	
	Re.L. <b>Bridgestone: 4 mm</b>	Re.R. <b>Bridgestone: 4 mm</b>	

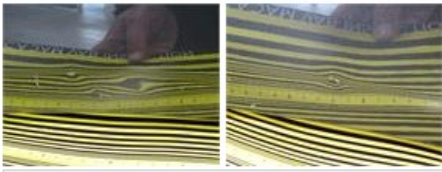
**Assistance equipment**

Repair kit	<b>Yes</b>	Compressor	<b>Yes</b>
------------	------------	------------	------------

Total cost ex VAT	<b>369,84</b>
-------------------	---------------

Wing R R, Dent(s) and scratch(es), LI - Repair and paint (complete)	<b>369,84</b>
---	---------------





Door R L, Scratch(es), Acceptable	0,00
<i>No pictures to display</i>	
Bonnet, Chemical polution, Acceptable	0,00
<i>No pictures to display</i>	
Door R R, Scratch(es), Acceptable	0,00
<i>No pictures to display</i>	
Bumper F, Scratch(es), Acceptable	0,00
<i>No pictures to display</i>	
Bumper R, Scratch(es), Acceptable	0,00
<i>No pictures to display</i>	