


**BMW 1 HATCH: GZ4385**

Vinnumber:	<b>WBA1V91020V740111</b>	Versionname:	<b>1.5 116D EFFICIENTDYNAMICS EDIT. (85KW)</b>
First Registrationdate:	<b>25/10/2016</b>	Fiscalpower:	
Expertise Mileage:	<b>27022</b>	Power Kw:	<b>85</b>
Bodytype:		Body color:	<b>White</b>
Gearbox:	<b>MAN 6 VIT</b>	Paint type:	<b>Metalic</b>
Transmission:	<b>Back</b>	Rims summer:	<b>Aluminium</b>
Fueltype:	<b>Diesel</b>	Oil level:	<b>OK</b>
Battery functioning:	<b>Yes</b>	Parking lot:	<b>4210</b>
Number of doors:	<b>5</b>		
Number of seats:	<b>5</b>		
Number head rests:	<b>5</b>		
Rims summer:	<b>Aluminium</b>		
Category:	<b>Passenger Car</b>		
Oil level:	<b>OK</b>		
Registration Certificate Car (BE):	<b>No</b>		

**Options**

Radio CD		Seats electric F L
GPS storage		Seats electric F R
GPS storage	<b>HD</b>	Central consol F
Windows electric F		Luggage cover
Windows electric R		Rear parking sensors
Cruise Control		
Steering wheel multifunctional		
Radio multimedia		
Type of headlighting	<b>Headlighting LED</b>	
Type of GPS	<b>GPS big screen color</b>	
Type of Lining	<b>Lining fabrics</b>	
Type of climate control	<b>Autom climate control</b>	

**Limited Technical Inspection**

Airco functioning	<b>OK</b>	Battery functioning	<b>Yes</b>
Tires wear profile	<b>OK</b>	Power steering	<b>Yes</b>
Idle position	<b>OK</b>	Sound engine	<b>OK</b>
Engine startingtime	<b>OK</b>	Clutch test	<b>OK</b>
Exhaust gass	<b>OK</b>	Wiper fluid level	<b>OK</b>
Handbrake	<b>OK</b>	Transmission	<b>OK</b>
		Lighting	<b>OK</b>
		Wiperblades	<b>OK</b>

**Degree of wear**

	<b>205/50/17/89 W LightMetal</b>			
Summer tyres:	Fr.L.	<b>Bridgestone: 5 mm</b>	Fr.R.	<b>Bridgestone: 5 mm</b>
	Re.L.	<b>Bridgestone: 5 mm</b>	Re.R.	<b>Bridgestone: 5 mm</b>

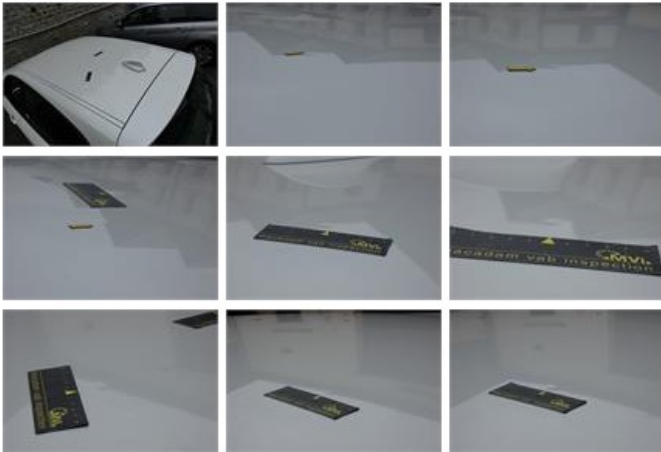
**Assistance equipment**

	Runflat	<b>Yes</b>
Total cost ex VAT		<b>807,80</b>
Alloy rim R R, Scratch(es), Acceptable		<b>0,00</b>
<i>No pictures to display</i>		
Sill trim R, Stone chip(s), Acceptable		<b>0,00</b>
<i>No pictures to display</i>		
Certificate Of Conformity, Missing, Acceptable		<b>0,00</b>



Roof, Hail damage, PDR - Hail

500,00



Bumper R, Dent(s) and scratch(es), LI - Repair and paint (complete)

307,80

