



BMW 3: 1GRT195

| | | | |
|------------------------------------|--------------------------|--------------|-----------------------------|
| Vinnumber: | WBA3K91040F934358 | Versionname: | 3 TOURING 316d 116PK |
| First Registrationdate: | 10/04/2014 | Fiscalpower: | |
| Expertise Mileage: | 198126 | Power Kw: | 85 |
| Bodytype: | | Body color: | Brown |
| Gearbox: | MAN 6 VIT | Paint type: | Metalic |
| Transmission: | Back | Rims summer: | Aluminium |
| Fueltype: | Diesel | Oil level: | OK |
| Maintenance: | OK | Parking lot: | 2531 |
| Battery functioning: | Yes | | |
| Number of doors: | 5 | | |
| Number of seats: | 5 | | |
| Number head rests: | 5 | | |
| Rims summer: | Aluminium | | |
| Category: | Passenger Car | | |
| Oil level: | OK | | |
| Registration Certificate Car (BE): | Yes | | |

Options

| | | | |
|--------------------------------|------------------------------|----------------------|-------------------|
| Radio CD | | Central consol F | |
| GPS storage | HD | Luggage cover | |
| GPS storage | | Rear parking sensors | |
| Windows electric F | | Type of Tow bar | No Tow bar |
| Windows electric R | | | |
| Cruise Control | | | |
| Steering wheel multifunctional | | | |
| Type of headlighting | Headlighting Halogen | | |
| Type of GPS | GPS big screen color | | |
| Type of Lining | Lining fabrics | | |
| Type of climate control | Autom climate control | | |

Limited Technical Inspection

| | | | |
|---------------------|-----------|---------------------|------------|
| Airco functioning | OK | Battery functioning | Yes |
| Tires wear profile | OK | Power steering | Yes |
| Idle position | OK | Sound engine | OK |
| Engine startingtime | OK | Clutch test | OK |
| Exhaust gass | OK | Wiper fluid level | OK |
| Handbrake | OK | Transmission | OK |
| | | Lighting | OK |
| | | Wiperblades | OK |

Degree of wear

| | | | | |
|---------------|----------------------------------|-----------------------|-------|-----------------------|
| | 205/60/16/92 W LightMetal | | | |
| Summer tyres: | Fr.L. | Goodyear: 4 mm | Fr.R. | Goodyear: 4 mm |
| | Re.L. | Michelin: 5 mm | Re.R. | Michelin: 5 mm |

Assistance equipment

| | | | |
|------------|------------|------------|------------|
| Repair kit | Yes | Compressor | Yes |
|------------|------------|------------|------------|

| | |
|-------------------|----------------|
| Total cost ex VAT | 2043,99 |
|-------------------|----------------|

| | |
|-----------------------------------|-------------|
| Door R R, Scratch(es), Acceptable | 0,00 |
|-----------------------------------|-------------|

No pictures to display

| | |
|--|-------------|
| Alloy rim R L, Scratch(es), Acceptable | 0,00 |
|--|-------------|

No pictures to display

| | |
|-----------------------------------|---------------|
| Door panel R L, Tear, E - Replace | 114,00 |
|-----------------------------------|---------------|



Seat cover F L, Stain, Acceptable 0,00

No pictures to display

Engine protective plate, Missing, E - Replace 35,00



Bumper F, Scratch(es), LI - Repair and paint (complete) 211,80



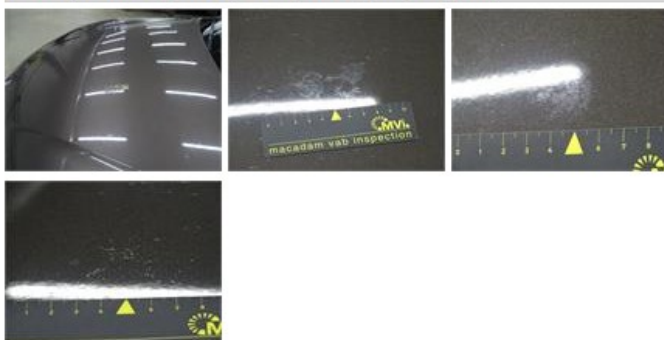
Door F R, Dent(s) and scratch(es), LI - Repair and paint (complete) 318,35



Rearview mirror housing R, Bad repair, LI - Repair and paint (complete) 115,56



Bonnet, Chemical polution, LI - Repair and paint (complete) 290,08



Bumper R, Dent(s) and scratch(es), Le - Replace and paint 651,00





Door frame R L, Scratch(es), Acceptable

0,00

No pictures to display

Wing R R, Dent(s) and scratch(es), LI - Repair and paint (complete)

308,20



Outer door handle F R, Scratch(es), Acceptable

0,00

No pictures to display