



**BMW 3: 1HHP328**

Vinnumber:	<b>WBA3L11050K257553</b>	Versionname:	<b>3 TOURING 320dA Eff.Dyn.Ed.163PK Aut.</b>
First Registrationdate:	<b>25/07/2014</b>	Fiscalpower:	
Expertise Mileage:	<b>134539</b>	Power Kw:	<b>120</b>
Bodytype:	<b>Break</b>	Body color:	<b>Black</b>
Gearbox:	<b>MAN 6 VIT</b>	Paint type:	<b>Metalic</b>
Transmission:	<b>Back</b>	Rims summer:	<b>Aluminium</b>
Fueltype:	<b>Diesel</b>	Oil level:	<b>OK</b>
Battery functioning:	<b>Yes</b>	Parking lot:	<b>1306</b>
Number of doors:	<b>5</b>		
Number of seats:	<b>5</b>		
Number head rests:	<b>5</b>		
Rims summer:	<b>Aluminium</b>		
Category:	<b>Passenger Car</b>		
Oil level:	<b>OK</b>		
Registration Certificate Car (BE):	<b>Yes</b>		

**Options**

Radio CD	Central consol F
Windows electric F	Luggage cover
Windows electric R	Rear parking sensors
Cruise Control	Type of Tow bar
Steering wheel multifunctional	<b>No Tow bar</b>
Seats F heated	
Radio multimedia	
Type of headlighting	<b>Headlighting Halogen</b>
Type of GPS	<b>GPS big screen color</b>
Type of Lining	<b>Lining leather</b>
Type of climate control	<b>Autom climate control</b>

**Limited Technical Inspection**

Airco functioning	<b>OK</b>	Battery functioning	<b>Yes</b>
Tires wear profile	<b>OK</b>	Power steering	<b>Yes</b>
Idle position	<b>OK</b>	Sound engine	<b>OK</b>
Engine startingtime	<b>OK</b>	Clutch test	<b>OK</b>
Exhaust gass	<b>OK</b>	Wiper fluid level	<b>OK</b>
Handbrake	<b>OK</b>	Transmission	<b>OK</b>
		Lighting	<b>OK</b>
		Wiperblades	<b>OK</b>

**Degree of wear**

<b>205/60/16/92 W LightMetal</b>				
Summer tyres:	Fr.L.	<b>Michelin: 3 mm</b>	Fr.R.	<b>Michelin: 3 mm</b>
	Re.L.	<b>Michelin: 3 mm</b>	Re.R.	<b>Michelin: 3 mm</b>

**Assistance equipment**

Spare wheel	<b>Yes</b>
Repair kit	<b>Yes</b>

Total cost ex VAT	290,08
-------------------	--------

Bumper R, Scratch(es), Acceptable	0,00
-----------------------------------	------

No pictures to display

Rear window, Scratch(es), Acceptable	0,00
--------------------------------------	------

No pictures to display

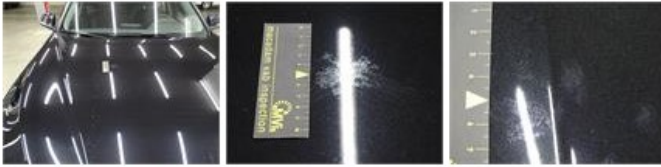
Bonnet, Scratch(es), Acceptable	0,00
---------------------------------	------

No pictures to display

No pictures to display

Bonnet, Chemical polution, LI - Repair and paint (complete)

290,08



Wing R R, Scratch(es), Acceptable

0,00

No pictures to display