



PEUGEOT 508: 1FRI279

Vinnumber:	VF38E9HD8DL047829	Versionname:	508 SW e-HDi Allure BMP 115PK Aut.
First Registrationdate:	1/10/2013	Fiscalpower:	
Expertise Mileage:	125540	Power Kw:	84
Bodytype:	Break	Body color:	Grey
Gearbox:	Automatic	Paint type:	Metalic
Transmission:	Front	Rims summer:	Aluminium
Fueltype:	Diesel	Oil level:	OK
Battery functioning:	Yes	Parking lot:	3304
Number of doors:	5		
Number of seats:	5		
Number head rests:	5		
Rims summer:	Aluminium		
Category:	Passenger Car		
Oil level:	OK		
Registration Certificate Car (BE):	Yes		

Options

Radio CD	Panoramic roof	
Windows electric F	Luggage cover	
Windows electric R	Front parking sensors	
Cruise Control	Rear parking sensors	
Steering wheel multifunctional	Type of Tow bar	No Tow bar
Alarm		
Radio multimedia		
Type of headlighting	Headlighting Halogen	
Type of GPS	GPS big screen color	
Type of Lining	Lining semi-artificial leather	
Type of climate control	Autom climate control	
Head-up Display		

Limited Technical Inspection

Airco functioning	OK	Battery functioning	Yes
Tires wear profile	OK	Power steering	Yes
Idle position	OK	Sound engine	OK
Engine startingtime	OK	Clutch test	OK
Exhaust gass	OK	Wiper fluid level	OK
Handbrake	OK	Transmission	OK
		Lighting	OK
		Wiperblades	OK

Degree of wear

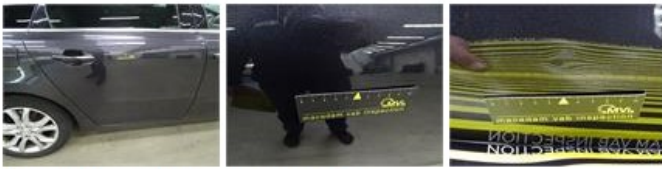
215/55/17/98 W LightMetal				
Summer tyres:	Fr.L.	Goodyear: 3 mm	Fr.R.	Goodyear: 3 mm
	Re.L.	Goodyear: 3 mm	Re.R.	Goodyear: 3 mm

Assistance equipment

Spare wheel	Yes	Jack	Yes
-------------	------------	------	------------

Total cost ex VAT	699,18
-------------------	---------------

Door R R, Dent(s) and scratch(es), LI - Repair and paint (complete)	382,02
---	---------------



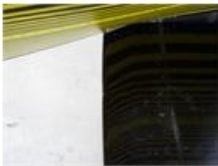
Door R L, Dent(s), PDR - Paintless dent repair

63,00



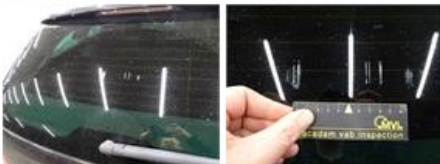
Bumper R, Dent(s) and scratch(es), LI - Repair and paint (complete)

254,16



Rear window, Scratch(es), E - Replace

0,00



Alloy rim F L, Scratch(es), Acceptable

0,00

No pictures to display