



SKODA Superb: 1HFG296

Vinnumber:	TMBJJ73T6F9009483	Versionname:	SUPERB COMBI GreenLine Elegance 105PK
First Registrationdate:	7/07/2014	Fiscalpower:	
Expertise Mileage:	172827	Power Kw:	77
Bodytype:	Break	Body color:	Black
Gearbox:	MAN 6 VIT	Paint type:	Metalic
Transmission:	Front	Rims summer:	Aluminium
Fueltype:	Diesel	Oil level:	OK
Battery functioning:	Yes	Parking lot:	3327
Number of doors:	5		
Number of seats:	5		
Number head rests:	5		
Rims summer:	Aluminium		
Category:	Passenger Car		
Oil level:	OK		
Registration Certificate Car (BE):	Yes		

Options

Radio CD		Seats R heated	
GPS storage		Seats electric F L	
GPS storage	HD	Seats electric F R	
Windows electric F		Sun Roof electric	
Windows electric R		Panoramic roof	
Cruise Control		Central consol F	
Steering wheel multifunctional		Luggage cover	
Seats F heated		Front parking sensors	
Radio multimedia		Rear parking sensors	
Type of headlighting	Headlighting Halogen	Type of Tow bar	Tow bar removable
Type of GPS	GPS big screen color		
Type of Lining	Lining leather		
Type of climate control	Autom climate control		
Sport seats			

Limited Technical Inspection

Airco functioning	OK	Battery functioning	Yes
Tires wear profile	OK	Power steering	Yes
Idle position	OK	Sound engine	NOT OK
Engine startingtime	OK	Clutch test	OK
Exhaust gass	OK	Wiper fluid level	OK
Handbrake	OK	Transmission	OK
		Lighting	OK
		Wiperblades	OK

Degree of wear

250/55/16/91 V LightMetal				
Summer tyres:	Fr.L.	Michelin: 4 mm	Fr.R.	Michelin: 4 mm
	Re.L.	Michelin: 4 mm	Re.R.	Michelin: 4 mm

Assistance equipment

Repair kit	No	Compressor	Yes
------------	-----------	------------	------------

Total cost ex VAT	538,09
-------------------	---------------

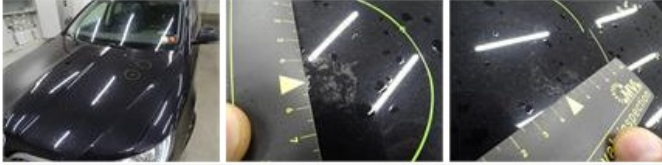
Door F L, Scratch(es), Acceptable	0,00
-----------------------------------	-------------

No pictures to display

Spoiler R, Scratch(es), Acceptable	0,00
------------------------------------	-------------

No pictures to display

Bumper R, Scratch(es), Acceptable	0,00
<i>No pictures to display</i>	
Bumper F, Scratch(es), Acceptable	0,00
<i>No pictures to display</i>	
Door R L, Scratch(es), Acceptable	0,00
<i>No pictures to display</i>	
Wing F L, Scratch(es), Acceptable	0,00
<i>No pictures to display</i>	
Door F R, Scratch(es), Acceptable	0,00
<i>No pictures to display</i>	
Interior, Dirty, Acceptable	0,00
<i>No pictures to display</i>	
Bonnet, Chemical polution, LI - Repair and paint (complete)	348,09



Alloy rim F R, Scratch(es), LI - Repair and paint (complete)	95,00
--	-------



Alloy rim F L, Scratch(es), LI - Repair and paint (complete)	95,00
--	-------

