



**TOYOTA AYGO: XT6882**

Vinnumber:	<b>BEDKGN60N169249</b>	Versionname:	<b>1.0 VVT-I X-PLAY MMT</b>
First Registrationdate:	<b>3/05/2016</b>	Fiscalpower:	
Expertise Mileage:	<b>47580</b>	Power Kw:	<b>51</b>
Bodytype:	<b>Hatchback</b>	Body color:	<b>Black</b>
Gearbox:	<b>Automatic</b>	Paint type:	<b>Metalic</b>
Transmission:	<b>Front</b>	Rims summer:	<b>Steel</b>
Fueltype:	<b>Petrol</b>	Oil level:	<b>OK</b>
Battery functioning:	<b>Yes</b>	Parking lot:	<b>3807</b>
Number of doors:	<b>5</b>		
Number of seats:	<b>4</b>		
Number head rests:	<b>2</b>		
Rims summer:	<b>Steel</b>		
Category:	<b>Passenger Car</b>		
Oil level:	<b>OK</b>		
Registration Certificate Car (BE):	<b>Yes</b>		

**Options**

Windows electric F	Luggage cover
Steering wheel multifunctional	Type of Tow bar
Radio multimedia	<b>No Tow bar</b>
Type of headlighting	<b>Headlighting Halogen</b>
Type of GPS	<b>GPS big screen color</b>
Type of Lining	<b>Lining fabrics</b>
Type of climate control	<b>Manual climate control</b>

**Limited Technical Inspection**

Airco functioning	<b>OK</b>	Battery functioning	<b>Yes</b>
Tires wear profile	<b>OK</b>	Power steering	<b>Yes</b>
Idle position	<b>OK</b>	Sound engine	<b>OK</b>
Engine startingtime	<b>OK</b>	Clutch test	<b>OK</b>
Exhaust gass	<b>OK</b>	Wiper fluid level	<b>OK</b>
Handbrake	<b>OK</b>	Transmission	<b>OK</b>
		Lighting	<b>OK</b>
		Wiperblades	<b>OK</b>

**Degree of wear**

<b>165/60/15/84 H Steel</b>				
Summer tyres:	Fr.L.	<b>Continental: 4 mm</b>	Fr.R.	<b>Continental: 4 mm</b>
	Re.L.	<b>Continental: 5 mm</b>	Re.R.	<b>Continental: 5 mm</b>

**Assistance equipment**

Repair kit	<b>Yes</b>	Compressor	<b>Yes</b>
------------	------------	------------	------------

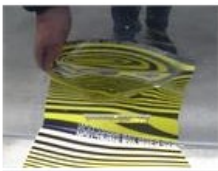
Total cost ex VAT 1430,00

Wing R L, Scratch(es), Acceptable 0,00

*No pictures to display*

Door F L, Dent(s) and scratch(es), LI - Repair and paint (complete) 446,68





Certificate Of Conformity, Missing, E - Replace 150,00

No pictures to display

Bumper R, Scratch(es), LI - Repair and paint (complete) 169,44



Wheel cover F L, Scratch(es), E - Replace 24,00



Roof, Scratch(es), LI - Repair and paint (complete) 385,20



Door R L, Scratch(es), Acceptable 0,00

No pictures to display

Door F R, Scratch(es), LI - Repair and paint (complete) 254,68

No pictures to display

Wheel cover F R, Scratch(es), Acceptable 0,00

