



**VOLKSWAGEN GOLF VII: SZ1960**

Vinnumber:	<b>VVWZZZAUZGP077793</b>	Versionname:	<b>2.0 TDI 110KW HIGHLINE DSG</b>
First Registrationdate:	<b>14/03/2016</b>	Fiscalpower:	
Expertise Mileage:	<b>72659</b>	Power Kw:	<b>110</b>
Bodytype:	<b>Hatchback</b>	Body color:	<b>Black</b>
Gearbox:	<b>Automatic</b>	Paint type:	<b>Metalic</b>
Transmission:	<b>Front</b>	Rims summer:	<b>Aluminium</b>
Fueltype:	<b>Diesel</b>	Oil level:	<b>OK</b>
Battery functioning:	<b>Yes</b>	Parking lot:	<b>3215</b>
Number of doors:	<b>5</b>		
Number of seats:	<b>5</b>		
Number head rests:	<b>5</b>		
Rims summer:	<b>Aluminium</b>		
Category:	<b>Passenger Car</b>		
Oil level:	<b>OK</b>		
Registration Certificate Car (BE):	<b>Yes</b>		

**Options**

Windows electric F	Seats electric F L
Windows electric R	Sun Roof electric
Cruise Control	Central consol F
Steering wheel multifunctional	Luggage cover
Seats F heated	Front parking sensors
Radio multimedia	Rear parking sensors
Type of headlighting	Type of Tow bar
Type of GPS	<b>Headlighting Xenon</b>
Type of Lining	<b>GPS big screen color</b>
Type of climate control	<b>Lining leather</b>
	<b>Autom climate control</b>
	<b>No Tow bar</b>

**Limited Technical Inspection**

Airco functioning	<b>OK</b>	Battery functioning	<b>Yes</b>
Tires wear profile	<b>OK</b>	Power steering	<b>Yes</b>
Idle position	<b>OK</b>	Sound engine	<b>OK</b>
Engine startingtime	<b>OK</b>	Clutch test	<b>OK</b>
Exhaust gass	<b>OK</b>	Wiper fluid level	<b>OK</b>
Handbrake	<b>OK</b>	Transmission	<b>OK</b>
		Lighting	<b>OK</b>
		Wiperblades	<b>OK</b>

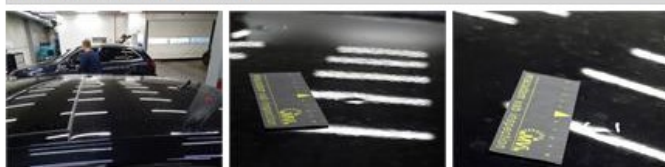
**Degree of wear**

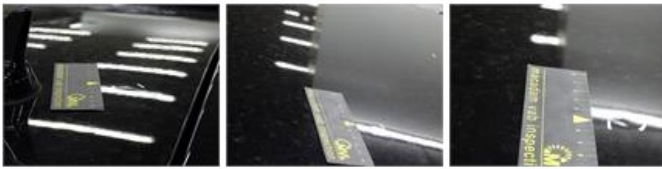
<b>225/45/17/91 W LightMetal</b>			
Summer tyres:	Fr.L.	Fr.R.	Hankook: 2 mm
	Re.L.	Re.R.	Hankook: 4 mm

**Assistance equipment**

Emergency spare wheel	<b>Yes</b>	Jack	<b>Yes</b>
-----------------------	------------	------	------------

Total cost ex VAT	<b>528,20</b>
Roof, Hail damage, PDR - Hail	<b>125,00</b>





Bonnet, Stone chip(s), Acceptable 0,00

No pictures to display

Wing R L, Scratch(es), Acceptable 0,00

No pictures to display

Alloy rim F L polished, Scratch(es), LI - Repair and paint (complete) 95,00



Wing R R, Dent(s) and scratch(es), LI - Repair and paint (complete) 308,20

