



**VOLVO V60: 1FVQ192**

Vinnumber:	<b>VV1FW8481E1175843</b>	Versionname:	<b>V60 BRE D2 Kinetic 115PK</b>
First Registrationdate:	<b>8/11/2013</b>	Fiscalpower:	
Expertise Mileage:	<b>125474</b>	Power Kw:	<b>84</b>
Bodytype:	<b>Break</b>	Body color:	<b>Grey</b>
Gearbox:	<b>MAN 6 VIT</b>	Paint type:	<b>Metalic</b>
Transmission:	<b>Front</b>	Rims summer:	<b>Aluminium</b>
Fueltype:	<b>Diesel</b>	Oil level:	<b>OK</b>
Maintenance:	<b>OK</b>	Parking lot:	<b>3819</b>
Battery functioning:	<b>Yes</b>		
Number of doors:	<b>5</b>		
Number of seats:	<b>5</b>		
Number head rests:	<b>5</b>		
Rims summer:	<b>Aluminium</b>		
Category:	<b>Passenger Car</b>		
Oil level:	<b>OK</b>		
Registration Certificate Car (BE):	<b>Yes</b>		

**Options**

Radio CD		Central consol F	
GPS storage	<b>HD</b>	Luggage cover	
GPS storage		Rear parking sensors	
Windows electric F		Type of Tow bar	<b>Tow bar fixed</b>
Windows electric R			
Cruise Control			
Steering wheel multifunctional			
Radio multimedia			
Type of headlighting	<b>Headlighting Halogen</b>		
Type of GPS	<b>GPS big screen color</b>		
Type of Lining	<b>Lining leather</b>		
Type of climate control	<b>Autom climate control</b>		

**Limited Technical Inspection**

Airco functioning	<b>OK</b>	Battery functioning	<b>Yes</b>
Tires wear profile	<b>OK</b>	Power steering	<b>Yes</b>
Idle position	<b>OK</b>	Sound engine	<b>OK</b>
Engine startingtime	<b>OK</b>	Clutch test	<b>OK</b>
Exhaust gass	<b>OK</b>	Wiper fluid level	<b>OK</b>
Handbrake	<b>OK</b>	Transmission	<b>OK</b>
		Lighting	<b>OK</b>
		Wiperblades	<b>OK</b>

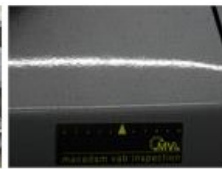
**Degree of wear**

<b>235/45/17/97 W LightMetal</b>				
Summer tyres:	Fr.L.	<b>Pirelli: 4 mm</b>	Fr.R.	<b>Pirelli: 4 mm</b>
	Re.L.	<b>Pirelli: 4 mm</b>	Re.R.	<b>Pirelli: 4 mm</b>

**Assistance equipment**

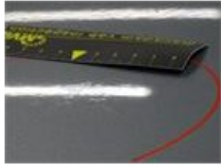
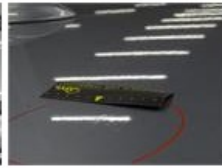
Repair kit	<b>Yes</b>	Compressor	<b>Yes</b>
------------	------------	------------	------------

Total cost ex VAT	<b>576,50</b>
Roof pillar R, Dent(s), Acceptable	<b>0,00</b>
<i>No pictures to display</i>	
Door F R, Bad repair, Paint	<b>0,00</b>



Roof, Chemical pollution, LI - Repair and paint (complete)

481,50



Backrest cover F L, Worn, Acceptable

0,00



Rocker panel inner F R, Scratch(es), Acceptable

0,00

*No pictures to display*

Bumper R, Scratch(es), Acceptable

0,00

*No pictures to display*

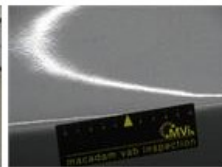
Alloy rim F R, Scratch(es), LI - Repair and paint (complete)

95,00



Wing F R, Bad repair, LI - Repair and paint (complete)

0,00



Wing R R, Dent(s) and scratch(es), Acceptable

0,00

*No pictures to display*