



ALFA ROMEO GIULIETTA: FP9491

Vinnumber:	ZAR9400007403774	Versionname:	2.0 JTDM 110KW DISTINCTIVE
First Registrationdate:	10/12/2015	Fiscalpower:	
Expertise Mileage:	187333	Power Kw:	110
Bodytype:	Hatchback	Body color:	Dark Grey
Gearbox:	MAN 6 VIT	Paint type:	Metalic
Transmission:	Front	Rims summer:	Aluminium
Fueltype:	Diesel	Oil level:	OK
Battery functioning:	Yes	Parking lot:	2301
Number of doors:	5		
Number of seats:	5		
Number head rests:	5		
Rims summer:	Aluminium		
Category:	Passenger Car		
Oil level:	OK		
Registration Certificate Car (BE):	Yes		

Options

Windows electric F	Central consol F
Windows electric R	Luggage cover
Cruise Control	Rear parking sensors
Steering wheel multifunctional	
Radio multimedia	
Type of headlighting	Headlighting Halogen
Type of GPS	GPS big screen color
Type of Lining	Lining fabrics
Type of climate control	Autom climate control

Limited Technical Inspection

Airco functioning	OK	Battery functioning	Yes
Tires wear profile	OK	Power steering	Yes
Idle position	OK	Sound engine	OK
Engine startingtime	OK	Clutch test	OK
Exhaust gass	OK	Wiper fluid level	OK
Handbrake	OK	Transmission	OK
		Lighting	OK
		Wiperblades	OK

Degree of wear

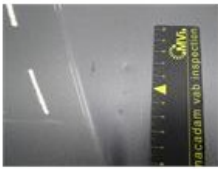
	205/55/16/91 V LightMetal			
Summer tyres:	Fr.L.	Pirelli: 3 mm	Fr.R.	Pirelli: 3 mm
	Re.L.	Pirelli: 4 mm	Re.R.	Pirelli: 4 mm

Assistance equipment

Emergency spare wheel	Yes	Jack	Yes
-----------------------	------------	------	------------

Total cost ex VAT	373,08
Bonnet, Dent(s) and scratch(es), LI - Repair and paint (complete)	290,08





Door F R, Scratch(es), Acceptable 0,00

No pictures to display

Bonnet, Dent(s), PDR - Paintless dent repair 63,00

No pictures to display

Alloy rim R L, Scratch(es), Acceptable 0,00

No pictures to display

Bumper F, Scratch(es), Acceptable 0,00

No pictures to display

Bumper moulding F L, Broken, Le - Replace and paint 20,00



Alloy rim F R, Scratch(es), Acceptable 0,00

No pictures to display