



**MERCEDES A: 1KXK863**

Vinnumber:	<b>WDD1760121V077075</b>	Versionname:	<b>1.5 A 180 CDI</b>
First Registrationdate:	<b>24/07/2015</b>	Fiscalpower:	
Expertise Mileage:	<b>72255</b>	Power Kw:	<b>80</b>
Bodytype:	<b>Hatchback</b>	Body color:	<b>Dark Grey</b>
Gearbox:	<b>MAN 6 VIT</b>	Paint type:	<b>Metalic</b>
Transmission:	<b>Front</b>	Rims summer:	<b>Steel</b>
Fueltype:	<b>Diesel</b>	Oil level:	<b>OK</b>
Battery functioning:	<b>Yes</b>	Parking lot:	<b>2109</b>
Number of doors:	<b>5</b>		
Number of seats:	<b>5</b>		
Number head rests:	<b>5</b>		
Rims summer:	<b>Steel</b>		
Category:	<b>Passenger Car</b>		
Oil level:	<b>OK</b>		
Registration Certificate Car (BE):	<b>Yes</b>		

**Options**

Radio CD	Central consol F
Windows electric F	Luggage cover
Windows electric R	Type of Tow bar
Steering wheel multifunctional	<b>No Tow bar</b>
Radio multimedia	
Type of headlighting	<b>Headlighting Halogen</b>
Type of GPS	<b>No GPS</b>
Type of Lining	<b>Lining fabrics</b>
Type of climate control	<b>Manual climate control</b>

**Limited Technical Inspection**

Airco functioning	<b>OK</b>	Battery functioning	<b>Yes</b>
Tires wear profile	<b>OK</b>	Power steering	<b>Yes</b>
Idle position	<b>OK</b>	Sound engine	<b>OK</b>
Engine startingtime	<b>OK</b>	Clutch test	<b>OK</b>
Exhaust gass	<b>OK</b>	Wiper fluid level	<b>OK</b>
Handbrake	<b>OK</b>	Transmission	<b>OK</b>
		Lighting	<b>OK</b>
		Wiperblades	<b>OK</b>

**Degree of wear**

<b>195/65/15/95 W Steel</b>				
Summer tyres:	Fr.L.	<b>Michelin: 5 mm</b>	Fr.R.	<b>Michelin: 5 mm</b>
	Re.L.	<b>Michelin: 6 mm</b>	Re.R.	<b>Michelin: 6 mm</b>

**Assistance equipment**

Repair kit	<b>Yes</b>	Compressor	<b>Yes</b>
------------	------------	------------	------------

Total cost ex VAT	996,43
-------------------	--------

Roof pillar L, Dent(s), PDR - Paintless dent repair	63,00
---	-------



Door R R, Scratch(es), LI - Repair and paint (complete)



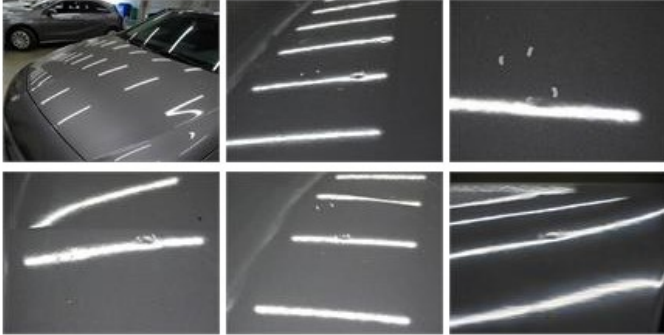
Door F R, Scratch(es), Acceptable 0,00

No pictures to display

Wheel cover F R, Scratch(es), Acceptable 0,00

No pictures to display

Bonnet, Hail damage, LI - Repair and paint (complete) 290,08



Roof, Hail damage, PDR - Hail 325,00

