


OPEL Zafira: 1GGL021

Vinnumber:	WOLPE9E31E2046745	Versionname:	ZAFIRA TOURER ecoFL.Cosmo S/S 136PK
First Registrationdate:	3/02/2014	Fiscalpower:	
Expertise Mileage:	174517	Power Kw:	100
Bodytype:		Body color:	Grey
Gearbox:	MAN 6 VIT	Paint type:	Metalic
Transmission:	Front	Rims summer:	Aluminium
Fueltype:	Diesel	Oil level:	OK
Maintenance:	OK	Parking lot:	1115
Maintenance:	22-1-2018		
Maintenance:	146000 KM		
Battery functioning:	Yes		
Number of doors:	5		
Number of seats:	5		
Number head rests:	5		
Rims summer:	Aluminium		
Category:	Passenger Car		
Oil level:	OK		
Registration Certificate Car (BE):	Yes		

Options

Radio CD		Central consol F
GPS storage	HD	Luggage cover
GPS storage		Front parking sensors
Windows electric F		Rear parking sensors
Windows electric R		
Cruise Control		
Steering wheel multifunctional		
Type of headlighting	Headlighting Halogen	
Type of GPS	GPS big screen color	
Type of Lining	Lining fabrics	
Type of climate control	Autom climate control	

Limited Technical Inspection

Airco functioning	OK	Battery functioning	Yes
Tires wear profile	OK	Power steering	Yes
Idle position	OK	Sound engine	OK
Engine startingtime	OK	Clutch test	OK
Exhaust gass	OK	Wiper fluid level	OK
Handbrake	OK	Transmission	OK
		Lighting	OK
		Wiperblades	OK

Degree of wear

225/50/17/98 V LightMetal				
Summer tyres:	Fr.L.	Uniroyal: 3 mm	Fr.R.	Uniroyal: 3 mm
	Re.L.	Continental: 4 mm	Re.R.	Continental: 4 mm

Assistance equipment

Emergency spare wheel	Yes	Jack	Yes
-----------------------	------------	------	------------

Total cost ex VAT 672,28

Bonnet, Dent(s) and scratch(es), LI - Repair and paint (complete) 338,08



Alloy rim F L, Scratch(es), Acceptable

0,00



Internal Boot Lining R, Scratch(es), Acceptable

0,00



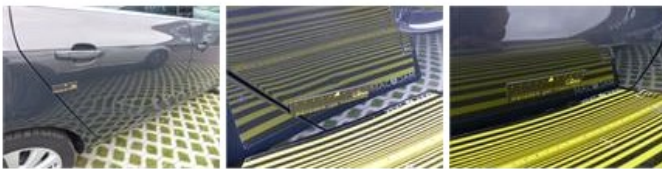
Door frame R L, Dent(s), It - Spot repair

115,56



Door R R, Dent(s) and scratch(es), Acceptable

0,00



Wing R R, Dent(s), Acceptable

0,00



Bumper spoiler F, Scratch(es), E - Replace

42,00



Windscreen, Repaired, P - Check

0,00



Roof pillar L, Dent(s), Acceptable

0,00



Bumper F, Scratch(es), Acceptable

0,00



Door R L, Scratch(es), Acceptable

0,00



Trunk lid covering R, Scratch(es), Smart repair

110,64



Moulding windscreen U, Broken, E - Replace

66,00



Internal Boot Lining L, Scratch(es), Acceptable

0,00



Wing F L, Scratch(es), Acceptable

0,00



Alloy rim F R, Scratch(es), Acceptable

0,00



Door F R, Dent(s) and scratch(es), Acceptable

0,00



Door F L, Scratch(es), Acceptable

0,00



Bumper R, Dent(s) and scratch(es), Acceptable

0,00

