



**VOLKSWAGEN Golf: 1FVM421**

Vinnumber:	<b>WVWZZZAUZEP534082</b>	Versionname:	<b>GOLF VAR Trendline 105PK</b>
First Registrationdate:	<b>7/11/2013</b>	Fiscalpower:	
Expertise Mileage:	<b>98367</b>	Power Kw:	<b>77</b>
Bodytype:	<b>Break</b>	Body color:	<b>Blue</b>
Gearbox:	<b>MAN 5 VIT</b>	Paint type:	<b>Metalic</b>
Transmission:	<b>Front</b>	Rims summer:	<b>Aluminium</b>
Fueltype:	<b>Diesel</b>	Oil level:	<b>OK</b>
Battery functioning:	<b>Yes</b>	Parking lot:	<b>3428</b>
Number of doors:	<b>5</b>		
Number of seats:	<b>5</b>		
Number head rests:	<b>5</b>		
Rims summer:	<b>Aluminium</b>		
Category:	<b>Passenger Car</b>		
Oil level:	<b>OK</b>		
Registration Certificate Car (BE):	<b>Yes</b>		

**Options**

Radio CD	Central consol F
Windows electric F	Luggage cover
Windows electric R	Type of Tow bar
Cruise Control	<b>No Tow bar</b>
Steering wheel multifunctional	
Radio multimedia	
Type of headlighting	<b>Headlighting Halogen</b>
Type of GPS	<b>GPS big screen color</b>
Type of Lining	<b>Lining fabrics</b>
Type of climate control	<b>Autom climate control</b>
Adaptive cruise control	

**Limited Technical Inspection**

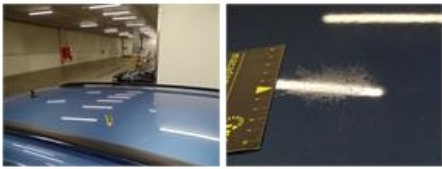
Airco functioning	<b>OK</b>	Battery functioning	<b>Yes</b>
Tires wear profile	<b>OK</b>	Power steering	<b>Yes</b>
Idle position	<b>OK</b>	Sound engine	<b>OK</b>
Engine startingtime	<b>OK</b>	Clutch test	<b>OK</b>
Exhaust gass	<b>OK</b>	Wiper fluid level	<b>OK</b>
Handbrake	<b>OK</b>	Transmission	<b>OK</b>
		Lighting	<b>OK</b>
		Wiperblades	<b>OK</b>

**Degree of wear**

<b>195/65/15/91 T LightMetal</b>				
Winter tyres:	Fr.L.	<b>Bridgestone: 5 mm</b>	Fr.R.	<b>Bridgestone: 5 mm</b>
	Re.L.	<b>Bridgestone: 5 mm</b>	Re.R.	<b>Bridgestone: 5 mm</b>

**Assistance equipment**

Emergency spare wheel	<b>Yes</b>	Jack	<b>Yes</b>
Total cost ex VAT			<b>1003,80</b>
Roof, Chemical polution, LI - Repair and paint (complete)			<b>481,50</b>



Rear window, Scratch(es), E - Replace 0,00



Tailgate, Scratch(es), Acceptable 0,00

No pictures to display

Wing R L, Scratch(es), Acceptable 0,00

No pictures to display

Sill outer R, Dent(s) and scratch(es), LI - Repair and paint (complete) 310,50



Bumper R, Scratch(es), LI - Repair and paint (complete) 211,80



Door R R, Dent(s), Acceptable 0,00

No pictures to display