



BMW 1: 1GIJ452			
Vinnumber:	WBA1C91070J521478	Versionname:	1 HATCH 116d Eff.Dyn.Ed. 116PK
First Registrationdate:	17/02/2014	Fiscalpower:	
Expertise Mileage:	104410	Power Kw:	85
Bodytype:	Hatchback	Body color:	Dark Grey
Gearbox:	MAN 6 VIT	Paint type:	Metalic
Transmission:	Back	Rims summer:	Steel
Fueltype:	Diesel	Oil level:	OK
Battery functioning:	Yes	Parking lot:	2604
Number of doors:	5		
Number of seats:	5		
Number head rests:	5		
Rims summer:	Steel		
Category:	Passenger Car		
Oil level:	OK		
Registration Certificate Car (BE):	Yes		

Options			
Radio CD		Central consol F	
Windows electric F		Luggage cover	
Windows electric R		Rear parking sensors	
Cruise Control		Type of Tow bar	No Tow bar
Steering wheel multifunctional			
Radio multimedia			
Type of headlighting	Headlighting Halogen		
Type of GPS	No GPS		
Type of Lining	Lining fabrics		
Type of climate control	Manual climate control		

Limited Technical Inspection			
Airco functioning	OK	Battery functioning	Yes
Tires wear profile	OK	Power steering	Yes
Idle position	OK	Sound engine	OK
Engine startingtime	OK	Clutch test	OK
Exhaust gass	OK	Wiper fluid level	OK
Handbrake	OK	Transmission	OK
		Lighting	OK
		Wiperblades	OK

Degree of wear				
	205/55/16/91 W Steel			
Summer tyres:	Fr.L.	Michelin: 3 mm	Fr.R.	Michelin: 3 mm
	Re.L.	Michelin: 4 mm	Re.R.	Michelin: 4 mm

Assistance equipment			
Repair kit	Yes	Compressor	Yes
Total cost ex VAT			554,08
Wheel cover F R, Scratch(es), E - Replace			30,00



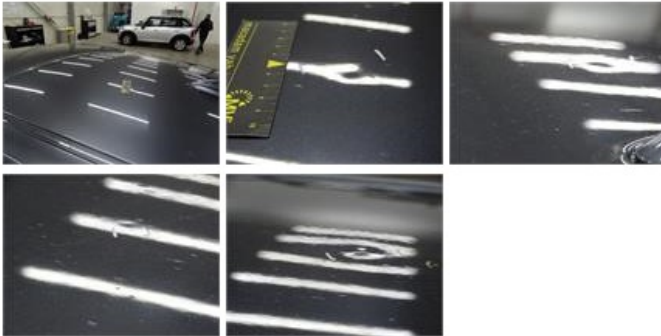
Protection plate M, Deformed / Strained, E - Replace

74,00



Roof, Hail damage, PDR - Hail

100,00



Bumper R, Scratch(es), Acceptable

0,00

No pictures to display

Wheel cover R L, Scratch(es), Acceptable

0,00

No pictures to display

Wheel cover R R, Scratch(es), E - Replace

30,00



Wheel cover F L, Scratch(es), E - Replace

30,00



Bumper F, Scratch(es), Acceptable

0,00

No pictures to display

Bonnet, Chemical polution, LI - Repair and paint (complete)

290,08

