



BMW 1: 1HTP579			
Vinnumber:	WBA1X510X0J781869	Versionname:	1 SPORTSHATCH 118dX 143PK
First Registrationdate:	30/09/2014	Fiscalpower:	
Expertise Mileage:	88310	Power Kw:	105
Bodytype:	Hatchback	Body color:	Black
Gearbox:	MAN 6 VIT	Paint type:	Metallic
Transmission:	Back	Rims summer:	Aluminium
Fueltype:	Diesel	Oil level:	OK
Battery functioning:	Yes	Parking lot:	1105
Number of doors:	3		
Number of seats:	5		
Number head rests:	5		
Rims summer:	Aluminium		
Category:	Passenger Car		
Oil level:	OK		
Registration Certificate Car (BE):	Yes		

Options			
Radio CD		Central consol F	
Windows electric F		Luggage cover	
Steering wheel multifunctional		Rear parking sensors	
Type of headlighting	Headlighting Halogen	Type of Tow bar	No Tow bar
Type of GPS	No GPS		
Type of Lining	Lining fabrics		
Type of climate control	Manual climate control		

Limited Technical Inspection			
Airco functioning	OK	Battery functioning	Yes
Tires wear profile	OK	Power steering	Yes
Idle position	OK	Sound engine	OK
Engine startingtime	OK	Clutch test	OK
Exhaust gass	OK	Wiper fluid level	OK
Handbrake	OK	Transmission	OK
		Lighting	OK
		Wiperblades	OK

Degree of wear				
	205/55/16/91 V LightMetal			
Summer tyres:	Fr.L.	Kleber: 5 mm	Fr.R.	Kleber: 5 mm
	Re.L.	Kleber: 4 mm	Re.R.	Kleber: 4 mm

Assistance equipment	
Repair kit	Yes
Compressor	Yes
Total cost ex VAT	811,98
Wing R R, Dent(s) and scratch(es), Acceptable	0,00
<i>No pictures to display</i>	
Wing F L, Scratch(es), LI - Repair and paint (complete)	220,18





Wing R L 3P, Scratch(es), Acceptable 0,00

No pictures to display

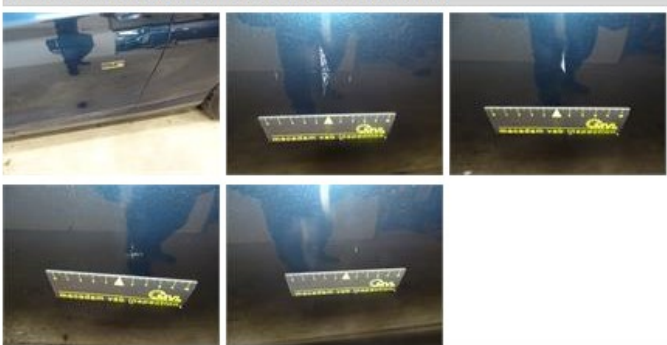
Door F R, Scratch(es), LI - Repair and paint (complete) 0,00



Roof, Chemical pollution, LI - Repair and paint (complete) 0,00



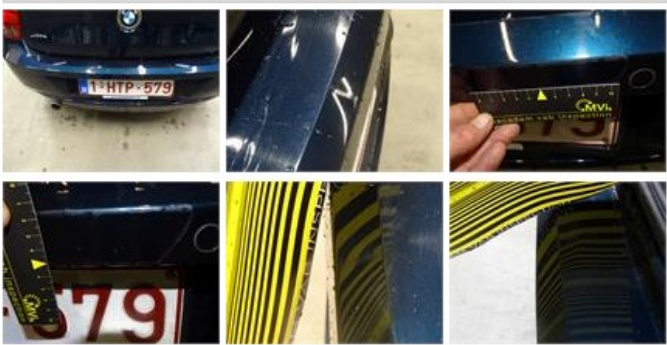
Door F L, Scratch(es), LI - Repair and paint (complete) 0,00



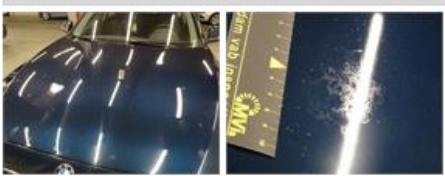
Alloy rim F R, Scratch(es), LI - Repair and paint (complete) 95,00



Bumper R, Dent(s) and scratch(es), LI - Repair and paint (complete) 211,80



Bonnet, Chemical pollution, LI - Repair and paint (complete) 0,00



Alloy rim R R, Scratch(es), LI - Repair and paint (complete) 95,00



Alloy rim R L, Scratch(es), LI - Repair and paint (complete)

95,00

