



LU Mercedes gla: GZ4707

| | | | |
|------------------------------------|--------------------------|--------------|------------------------|
| Vinnumber: | WDC1569081J318462 | Versionname: | GLA 200 d Style |
| First Registrationdate: | 3/10/2016 | Fiscalpower: | |
| Expertise Mileage: | 48811 | Power Kw: | 100 |
| Bodytype: | | Body color: | Grey |
| Gearbox: | MAN 6 VIT | Paint type: | Metalic |
| Transmission: | Front | Rims summer: | Aluminium |
| Fueltype: | Diesel | Oil level: | OK |
| Battery functioning: | Yes | Parking lot: | 1331 |
| Number of doors: | 5 | | |
| Number of seats: | 5 | | |
| Number head rests: | 5 | | |
| Rims summer: | Aluminium | | |
| Category: | Passenger Car | | |
| Oil level: | OK | | |
| Registration Certificate Car (BE): | Yes | | |

Options

| | | | |
|--------------------------------|-----------------------------|-----------------------|-------------------|
| Radio CD | | Central consol F | |
| GPS storage | SD | Luggage cover | |
| GPS storage | | Front parking sensors | |
| Windows electric F | | Rear parking sensors | |
| Windows electric R | | Type of Tow bar | No Tow bar |
| Cruise Control | | | |
| Steering wheel multifunctional | | | |
| Seats F heated | | | |
| Radio multimedia | | | |
| Type of headlighting | Headlighting Xenon | | |
| Type of GPS | GPS big screen color | | |
| Type of Lining | Lining leather | | |

Limited Technical Inspection

| | | | |
|---------------------|-----------|---------------------|------------|
| Airco functioning | OK | Battery functioning | Yes |
| Tires wear profile | OK | Power steering | Yes |
| Idle position | OK | Sound engine | OK |
| Engine startingtime | OK | Clutch test | OK |
| Exhaust gass | OK | Wiper fluid level | OK |
| Handbrake | OK | Transmission | OK |
| | | Lighting | OK |
| | | Wiperblades | OK |

Degree of wear

| | | | | |
|----------------------------------|-------|--------------------------|-------|--------------------------|
| 215/60/17/96 V LightMetal | | | | |
| Summer tyres: | Fr.L. | Bridgestone: 6 mm | Fr.R. | Bridgestone: 6 mm |
| | Re.L. | Bridgestone: 7 mm | Re.R. | Bridgestone: 7 mm |

Assistance equipment

| | | | |
|------------|-----------|------------|------------|
| Repair kit | No | Compressor | Yes |
|------------|-----------|------------|------------|

| | |
|-------------------|----------------|
| Total cost ex VAT | 1491,18 |
|-------------------|----------------|

| | |
|---|---------------|
| Bumper F L, Scratch(es), It - Spot repair | 115,56 |
|---|---------------|



Wing R R, Scratch(es), LI - Repair and paint (complete)

308,20



Bonnet, Scratch(es), LI - Repair and paint (complete)

290,08



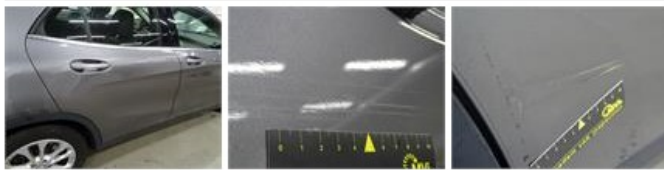
Mirror side blinker L, Scratch(es), E - Replace

30,00



Door R R, Scratch(es), LI - Repair and paint (complete)

318,35



Door F R, Dent(s) and scratch(es), LI - Repair and paint (complete)

318,35



Bumper cover R M, Deformed / Strained, Smart repair

110,64

