



**MERCEDES CLA SHOOTING BRAKE: 1NDR847**

Vinnumber:	<b>WDD1179081N338693</b>	Versionname:	<b>2.1 CLA 200 D SHOOTING BRAKE</b>
First Registrationdate:	<b>29/01/2016</b>	Fiscalpower:	
Expertise Mileage:	<b>180020</b>	Power Kw:	<b>100</b>
Bodytype:		Body color:	<b>Black</b>
Gearbox:	<b>MAN 6 VIT</b>	Paint type:	<b>Metalic</b>
Transmission:	<b>Front</b>	Rims summer:	<b>Aluminium</b>
Fueltype:	<b>Diesel</b>	Oil level:	<b>OK</b>
Maintenance:	<b>OK</b>	Parking lot:	<b>4405</b>
Maintenance:	<b>SERVICE A IN 10700KM</b>		
Battery functioning:	<b>Yes</b>		
Number of doors:	<b>5</b>		
Number of seats:	<b>5</b>		
Number head rests:	<b>1</b>		
Rims summer:	<b>Aluminium</b>		
Category:	<b>Passenger Car</b>		
Oil level:	<b>OK</b>		
Registration Certificate Car (BE):	<b>Yes</b>		

**Options**

Radio CD		Central consol F	
GPS storage		Luggage cover	
GPS storage	<b>SD</b>	Front parking sensors	
Windows electric F		Rear parking sensors	
Windows electric R		Type of Tow bar	<b>Tow bar fixed</b>
Cruise Control			
Steering wheel multifunctional			
Radio multimedia			
Type of headlighting	<b>Headlighting Halogen</b>		
Type of GPS	<b>GPS big screen color</b>		
Type of Lining	<b>Lining semi-artificial leather</b>		
Type of climate control	<b>Manual climate control</b>		
Sport seats			

**Limited Technical Inspection**

Airco functioning	<b>OK</b>	Battery functioning	<b>Yes</b>
Tires wear profile	<b>OK</b>	Power steering	<b>Yes</b>
Idle position	<b>OK</b>	Sound engine	<b>OK</b>
Engine startingtime	<b>OK</b>	Clutch test	<b>OK</b>
Exhaust gass	<b>OK</b>	Wiper fluid level	<b>OK</b>
Handbrake	<b>OK</b>	Transmission	<b>OK</b>
		Lighting	<b>OK</b>
		Wiperblades	<b>OK</b>

**Degree of wear**

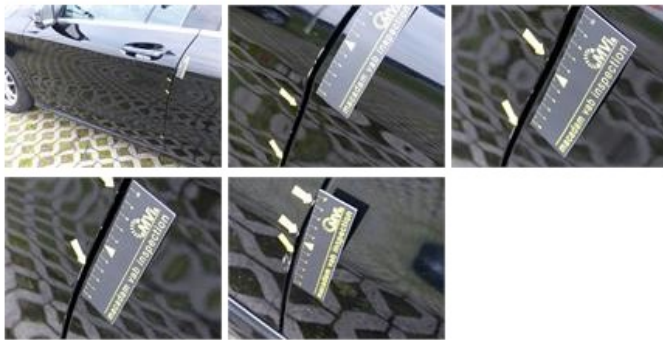
	<b>205/55/16/91 H LightMetal</b>			
Winter tyres:	Fr.L.	<b>Bridgestone: 6 mm</b>	Fr.R.	<b>Bridgestone: 5 mm</b>
	Re.L.	<b>Vredestein: 8 mm</b>	Re.R.	<b>Vredestein: 8 mm</b>

**Assistance equipment**

Repair kit	<b>Yes</b>	Compressor	<b>Yes</b>
Total cost ex VAT			<b>1071,30</b>
Alloy rim F L, Scratch(es), LI - Repair and paint (complete)			<b>95,00</b>



Door F L, Scratch(es), LI - Repair and paint (complete) 318,35



Alloy rim R R, Scratch(es), Acceptable 0,00

No pictures to display

Bumper F, Scratch(es), LI - Repair and paint (complete) 211,80



Bumper trim R, Deformed / Strained, E - Replace 91,35



Alloy rim F R, Scratch(es), LI - Repair and paint (complete) 95,00



Maintenance, Maintenance, P - Check 0,00



Bonnet, Dent(s), Acceptable 0,00

No pictures to display

Door F R, Dent(s) and scratch(es), Acceptable 0,00

No pictures to display

Roof pillar L, Dent(s), Acceptable 0,00

No pictures to display

Bumper R, Dent(s) and scratch(es), LI - Repair and paint (complete) 259,80





Wing R R, Dent(s), Acceptable	0,00
<i>No pictures to display</i>	
Door R L, Scratch(es), Acceptable	0,00
<i>No pictures to display</i>	