



**BMW 5: 1FWJ250**

Vinnumber:	<b>WBA5J51020D579982</b>	Versionname:	<b>5 TOURING 520dXA 163PK Aut.</b>
First Registrationdate:	<b>18/11/2013</b>	Fiscalpower:	
Expertise Mileage:	<b>110582</b>	Power Kw:	<b>120</b>
Bodytype:	<b>Break</b>	Body color:	<b>Dark Grey</b>
Gearbox:	<b>Automatic</b>	Paint type:	<b>Metalic</b>
Transmission:	<b>4 Weel</b>	Rims summer:	<b>Aluminium</b>
Fueltype:	<b>Diesel</b>	Oil level:	<b>OK</b>
Battery functioning:	<b>Yes</b>	Parking lot:	<b>2722</b>
Number of doors:	<b>5</b>		
Number of seats:	<b>5</b>		
Number head rests:	<b>5</b>		
Rims summer:	<b>Aluminium</b>		
Category:	<b>Passenger Car</b>		
Oil level:	<b>OK</b>		
Registration Certificate Car (BE):	<b>Yes</b>		

**Options**

Radio CD	Central consol F
Windows electric F	Luggage cover
Windows electric R	Front parking sensors
Cruise Control	Type of Tow bar
Steering wheel multifunctional	<b>No Tow bar</b>
Seats F heated	
Radio multimedia	
Type of headlighting	<b>Headlighting Xenon</b>
Type of GPS	<b>GPS big screen color</b>
Type of Lining	<b>Lining leather</b>
Type of climate control	<b>Autom climate control</b>

**Limited Technical Inspection**

Airco functioning	<b>OK</b>	Battery functioning	<b>Yes</b>
Tires wear profile	<b>OK</b>	Power steering	<b>Yes</b>
Idle position	<b>OK</b>	Sound engine	<b>OK</b>
Engine startingtime	<b>OK</b>	Clutch test	<b>OK</b>
Exhaust gass	<b>OK</b>	Wiper fluid level	<b>OK</b>
Handbrake	<b>OK</b>	Transmission	<b>OK</b>
		Lighting	<b>OK</b>
		Wiperblades	<b>OK</b>

**Degree of wear**

<b>225/55/17/97 H LightMetal</b>				
Winter tyres:	Fr.L.	<b>Michelin: 5 mm</b>	Fr.R.	<b>Michelin: 5 mm</b>
	Re.L.	<b>Michelin: 5 mm</b>	Re.R.	<b>Michelin: 5 mm</b>

**Assistance equipment**

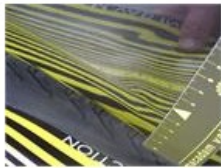
Repair kit	<b>Yes</b>	Compressor	<b>Yes</b>
Total cost ex VAT			<b>889,18</b>
Door R R, Dent(s) and scratch(es), LI - Repair and paint (complete)			<b>382,02</b>



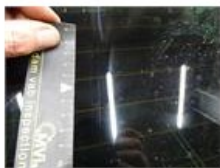
Bumper R, Scratch(es), Acceptable	0,00
-----------------------------------	------

No pictures to display

Wing R R, Dent(s), PDR - Paintless dent repair	63,00
--	-------



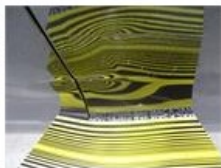
Rear window, Scratch(es), E - Replace	0,00
---------------------------------------	------



Alloy rim F R, Scratch(es), LI - Repair and paint (complete)	95,00
--	-------

No pictures to display

Door F R, Dent(s) and scratch(es), LI - Repair and paint (complete)	0,00
---	------



Alloy rim R R, Scratch(es), LI - Repair and paint (complete)	95,00
--	-------



Bumper F, Dent(s), LI - Repair and paint (complete)	254,16
---	--------

