



**MERCEDES A: 1FWN167**

Vinnumber:	<b>WDD1760121J208418</b>	Versionname:	<b>A 180 CDI BE 109PK</b>
First Registrationdate:	<b>19/11/2013</b>	Fiscalpower:	
Expertise Mileage:	<b>79794</b>	Power Kw:	<b>80</b>
Bodytype:		Body color:	<b>Grey</b>
Gearbox:	<b>MAN 6 VIT</b>	Paint type:	<b>Metalic</b>
Transmission:		Rims summer:	<b>Aluminium</b>
Fueltype:	<b>Diesel</b>	Oil level:	<b>OK</b>
Battery functioning:	<b>Yes</b>	Parking lot:	<b>2504</b>
Number of doors:	<b>5</b>		
Number of seats:	<b>5</b>		
Number head rests:	<b>5</b>		
Rims summer:	<b>Aluminium</b>		
Category:	<b>Passenger Car</b>		
Oil level:	<b>OK</b>		
Registration Certificate Car (BE):	<b>Yes</b>		

**Options**

Radio CD	Central consol F	
Windows electric F	Luggage cover	
Windows electric R	Type of Tow bar	<b>No Tow bar</b>
Steering wheel multifunctional		
Seats F heated		
Radio multimedia		
Type of headlighting	<b>Headlighting Halogen</b>	
Type of GPS	<b>GPS big screen color</b>	
Type of Lining	<b>Lining semi-leather</b>	
Type of climate control	<b>Manual climate control</b>	

**Limited Technical Inspection**

Airco functioning	<b>OK</b>	Battery functioning	<b>Yes</b>
Tires wear profile	<b>OK</b>	Power steering	<b>Yes</b>
Idle position	<b>OK</b>	Sound engine	<b>OK</b>
Engine startingtime	<b>OK</b>	Clutch test	<b>OK</b>
Exhaust gass	<b>OK</b>	Wiper fluid level	<b>OK</b>
Handbrake	<b>OK</b>	Transmission	<b>OK</b>
		Lighting	<b>OK</b>
		Wiperblades	<b>OK</b>

**Degree of wear**

<b>205/55/16/91 V LightMetal</b>				
Summer tyres:	Fr.L.	<b>Continental: 7 mm</b>	Fr.R.	<b>Continental: 7 mm</b>
	Re.L.	<b>Continental: 5 mm</b>	Re.R.	<b>Continental: 5 mm</b>

**Assistance equipment**

Repair kit	<b>Yes</b>	Compressor	<b>Yes</b>
------------	------------	------------	------------

Total cost ex VAT 933,35

Wing R R, Dent(s) and scratch(es), LI - Repair and paint (complete) 308,20



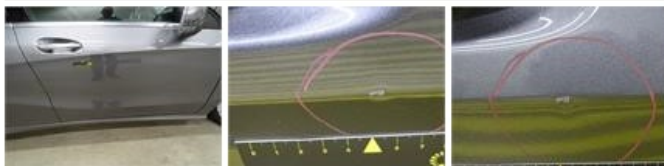
Bumper R, Dent(s) and scratch(es), LI - Repair and paint (complete)

211,80



Door F R, Dent(s) and scratch(es), LI - Repair and paint (complete)

318,35



Roof, Dent(s), Acceptable

0,00

No pictures to display

Alloy rim F L, Scratch(es), LI - Repair and paint (complete)

95,00



Bonnet, Stone chip(s), Acceptable

0,00

No pictures to display