



**MERCEDES GLA: 1GRY595**

Vinnumber:	<b>WDC1569081J010907</b>	Versionname:	<b>GLA 200 CDI 136PK</b>
First Registrationdate:	<b>11/04/2014</b>	Fiscalpower:	
Expertise Mileage:	<b>65097</b>	Power Kw:	<b>100</b>
Bodytype:		Body color:	<b>Grey</b>
Gearbox:	<b>Automatic</b>	Paint type:	<b>Metalic</b>
Transmission:		Rims summer:	<b>Aluminium</b>
Fueltype:	<b>Diesel</b>	Oil level:	<b>OK</b>
Battery functioning:	<b>Yes</b>	Parking lot:	<b>3708</b>
Number of doors:	<b>5</b>		
Number of seats:	<b>5</b>		
Number head rests:	<b>5</b>		
Rims summer:	<b>Aluminium</b>		
Category:	<b>Passenger Car</b>		
Oil level:	<b>OK</b>		
Registration Certificate Car (BE):	<b>Yes</b>		

**Options**

Radio CD	Central consol F
Windows electric F	Luggage cover
Windows electric R	Type of Tow bar
Cruise Control	<b>No Tow bar</b>
Steering wheel multifunctional	
Seats F heated	
Radio multimedia	
Type of headlighting	<b>Headlighting Xenon</b>
Type of GPS	<b>GPS big screen color</b>
Type of Lining	<b>Lining leather</b>
Type of climate control	<b>Autom climate control</b>

**Limited Technical Inspection**

Airco functioning	<b>OK</b>	Battery functioning	<b>Yes</b>
Tires wear profile	<b>OK</b>	Power steering	<b>Yes</b>
Idle position	<b>OK</b>	Sound engine	<b>OK</b>
Engine startingtime	<b>OK</b>	Clutch test	<b>OK</b>
Exhaust gass	<b>OK</b>	Wiper fluid level	<b>OK</b>
Handbrake	<b>OK</b>	Transmission	<b>OK</b>
		Lighting	<b>OK</b>
		Wiperblades	<b>OK</b>

**Degree of wear**

<b>235/50/18/97 V LightMetal</b>				
Summer tyres:	Fr.L.	<b>Dunlop: 4 mm</b>	Fr.R.	<b>Dunlop: 4 mm</b>
	Re.L.	<b>Dunlop: 4 mm</b>	Re.R.	<b>Dunlop: 4 mm</b>

**Assistance equipment**

Repair kit	<b>Yes</b>	Compressor	<b>Yes</b>
------------	------------	------------	------------

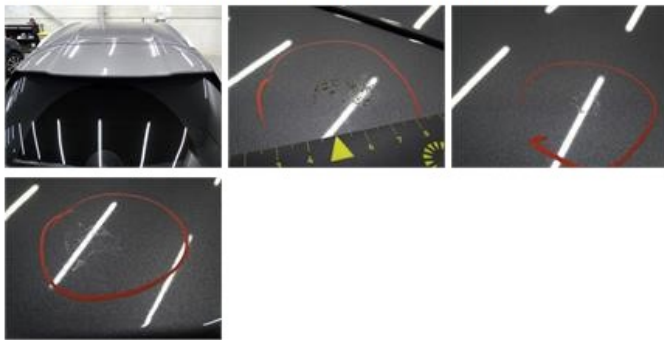
Total cost ex VAT 2548,17

Bumper R, Dent(s) and scratch(es), LI - Repair and paint (complete) 254,16



Rear spoiler, Chemical pollution, LI - Repair and paint (complete)

115,56



Bumper F, Dent(s) and scratch(es), Acceptable

0,00

No pictures to display

Door R R, Scratch(es), LI - Repair and paint (complete)

382,02



Rearlight R , Broken, E - Replace

132,00



Door F R, Scratch(es), LI - Repair and paint (complete)

382,02



Wing F R, Scratch(es), LI - Repair and paint (complete)

264,21



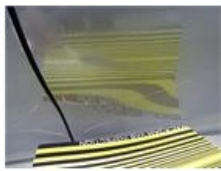
Bumper R, Scratch(es), LI - Repair and paint (complete)

254,16



Door R L, Dent(s) and scratch(es), LI - Repair and paint (complete)

382,02



Door F L, Dent(s) and scratch(es), LI - Repair and paint (complete) 382,02

