



FORD Transit Custom: 1GDM422

| | | | |
|------------------------------------|---------------------------------|--------------|--|
| Vinnumber: | WF0ZXXTTGZDD10073 | Versionname: | TRANS.CUSTOM B/F2C 290L LWB Trend 100PK |
| First Registrationdate: | 8/01/2014 | Fiscalpower: | |
| Expertise Mileage: | 145973 | Power Kw: | 74 |
| Bodytype: | Transporter | Body color: | White |
| Gearbox: | MAN 6 VIT | Paint type: | Metalic |
| Transmission: | | Rims summer: | Steel |
| Fueltype: | Diesel | Oil level: | OK |
| Battery functioning: | Yes | Parking lot: | 3725 |
| Number of doors: | 5 | | |
| Number of seats: | 6 | | |
| Number head rests: | 6 | | |
| Rims summer: | Steel | | |
| Category: | Light Commercial Vehicle | | |
| Oil level: | OK | | |
| Registration Certificate Car (BE): | Yes | | |

Options

| | |
|--------------------------------|-------------------------------|
| Windows electric F | Central consol F |
| Cruise Control | Front parking sensors |
| Steering wheel multifunctional | Rear parking sensors |
| Radio multimedia | Type of Tow bar |
| Type of headlighting | Headlighting Halogen |
| Type of GPS | No GPS |
| Type of Lining | Lining fabrics |
| Type of climate control | Manual climate control |
| | Tow bar fixed |

Limited Technical Inspection

| | | | |
|---------------------|-----------|---------------------|------------|
| Airco functioning | OK | Battery functioning | Yes |
| Tires wear profile | OK | Power steering | Yes |
| Idle position | OK | Sound engine | OK |
| Engine startingtime | OK | Clutch test | OK |
| Exhaust gass | OK | Wiper fluid level | OK |
| Handbrake | OK | Transmission | OK |
| | | Lighting | OK |
| | | Wiperblades | OK |

Degree of wear

| | | | | |
|---------------|------------------------------|--------------------------|-------|--------------------------|
| | 215/65/15/104 T Steel | | | |
| Summer tyres: | Fr.L. | Continental: 8 mm | Fr.R. | Continental: 8 mm |
| | Re.L. | Bridgestone: 8 mm | Re.R. | Bridgestone: 8 mm |

Assistance equipment

| | |
|-------------|------------|
| Spare wheel | Yes |
|-------------|------------|

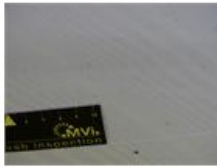
| | |
|-------------------|--------|
| Total cost ex VAT | 970,41 |
|-------------------|--------|

| | |
|---|--------|
| Roof, Dent(s), LI - Repair and paint (complete) | 361,13 |
|---|--------|





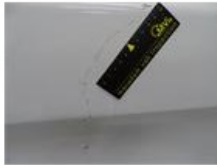
Wing R R, Dent(s) and scratch(es), LI - Repair and paint (complete) 231,15



Ignition key, Missing, E - Replace 150,00

No pictures to display

Wing F R, Dent(s) and scratch(es), LI - Repair and paint (complete) 165,13



Maintenance book, Missing, E - Replace 0,00

No pictures to display

Bonnet, Dent(s), PDR - Paintless dent repair 63,00



Wing R L, Scratch(es), 67 - Polish 0,00

No pictures to display