



**VOLKSWAGEN Sharan: 1FHM193**

Vinnumber:	<b>WVWZZZ7NZEV000999</b>	Versionname:	<b>SHARAN Comfortline 140PK</b>
First Registrationdate:	<b>1/07/2013</b>	Fiscalpower:	
Expertise Mileage:	<b>118763</b>	Power Kw:	<b>103</b>
Bodytype:	<b>MPV</b>	Body color:	<b>Dark Blue</b>
Gearbox:	<b>MAN 6 VIT</b>	Paint type:	<b>Metalic</b>
Transmission:		Rims summer:	<b>Aluminium</b>
Fueltype:	<b>Diesel</b>	Oil level:	<b>OK</b>
Battery functioning:	<b>Yes</b>	Parking lot:	<b>3404</b>
Number of doors:	<b>5</b>		
Number of seats:	<b>7</b>		
Number head rests:	<b>7</b>		
Rims summer:	<b>Aluminium</b>		
Category:	<b>Passenger Car</b>		
Oil level:	<b>OK</b>		

**Options**

Radio CD	Central consol F
Windows electric F	Luggage cover
Windows electric R	Rear parking sensors
Cruise Control	Type of Tow bar
Steering wheel multifunctional	<b>No Tow bar</b>
Seats F heated	
Type of headlighting	<b>Headlighting Halogen</b>
Type of GPS	<b>GPS big screen color</b>
Type of Lining	<b>Lining leather</b>
Type of climate control	<b>Autom climate control</b>

**Limited Technical Inspection**

Airco functioning	<b>OK</b>	Battery functioning	<b>Yes</b>
Tires wear profile	<b>OK</b>	Power steering	<b>Yes</b>
Idle position	<b>OK</b>	Sound engine	<b>OK</b>
Engine startingtime	<b>OK</b>	Clutch test	<b>OK</b>
Exhaust gass	<b>OK</b>	Wiper fluid level	<b>OK</b>
Handbrake	<b>OK</b>	Transmission	<b>OK</b>
		Lighting	<b>OK</b>
		Wiperblades	<b>OK</b>

**Degree of wear**

Winter tyres:	<b>215/60/16/99 H LightMetal</b>			
	Fr.L.	<b>Semperit: 6 mm</b>	Fr.R.	<b>Semperit: 6 mm</b>
	Re.L.	<b>Continental: 7 mm</b>	Re.R.	<b>Continental: 7 mm</b>

**Assistance equipment**

Total cost ex VAT	2077,70
Rearview mirror housing R, Scratch(es), LI - Repair and paint (complete)	115,56



Wing R R, Dent(s) and scratch(es), LI - Repair and paint (complete)

369,84



Bumper grille, Broken, E - Replace 34,08



Bonnet, Dent(s), PDR - Paintless dent repair 63,00



Door R R, Dent(s) and scratch(es), LI - Repair and paint (complete) 382,02



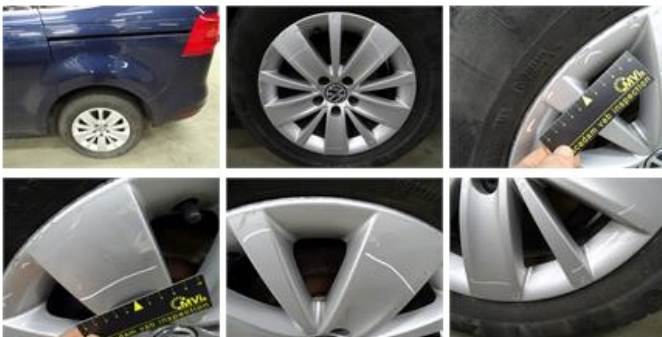
Door F R, Scratch(es), Acceptable 0,00

No pictures to display

Door R L, Dent(s) and scratch(es), LI - Repair and paint (complete) 382,02



Alloy rim R L, Scratch(es), LI - Repair and paint (complete) 95,00



Bumper F, Dent(s), LI - Repair and paint (complete) 254,16



Door F L, Dent(s) and scratch(es), LI - Repair and paint (complete) 382,02

