



MERCEDES C BREAK: 1JLX554

Vinnumber:	WDD2052361F155467	Versionname:	1.6 C 180 BLUETEC AVANTGARDE
First Registrationdate:	20/01/2015	Fiscalpower:	
Expertise Mileage:	107887	Power Kw:	85
Bodytype:	Break	Body color:	Dark Grey
Gearbox:	MAN 6 VIT	Paint type:	Metalic
Transmission:	Back	Rims summer:	Aluminium
Fueltype:	Diesel	Oil level:	OK
Battery functioning:	Yes	Parking lot:	1531
Number of doors:	5		
Number of seats:	5		
Number head rests:	5		
Rims summer:	Aluminium		
Category:	Passenger Car		
Oil level:	OK		
Registration Certificate Car (BE):	Yes		

Options

Radio CD	Central consol F
Windows electric F	Luggage cover
Windows electric R	Front parking sensors
Cruise Control	Rear parking sensors
Steering wheel multifunctional	Type of Tow bar
Radio multimedia	No Tow bar
Type of headlighting	Headlighting LED
Type of GPS	GPS big screen color
Type of Lining	Lining semi-artificial leather
Type of climate control	Autom climate control

Limited Technical Inspection

Airco functioning	OK	Battery functioning	Yes
Tires wear profile	OK	Power steering	Yes
Idle position	OK	Sound engine	OK
Engine startingtime	OK	Clutch test	OK
Exhaust gass	OK	Wiper fluid level	OK
Handbrake	OK	Transmission	OK
		Lighting	OK
		Wiperblades	OK

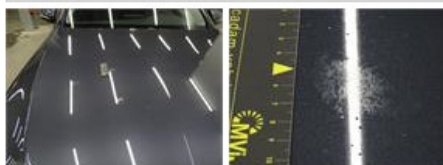
Degree of wear

	225/60/17/94 H LightMetal			
Winter tyres:	Fr.L.	Goodyear: 4 mm	Fr.R.	Goodyear: 4 mm
	Re.L.	Goodyear: 4 mm	Re.R.	Goodyear: 4 mm

Assistance equipment

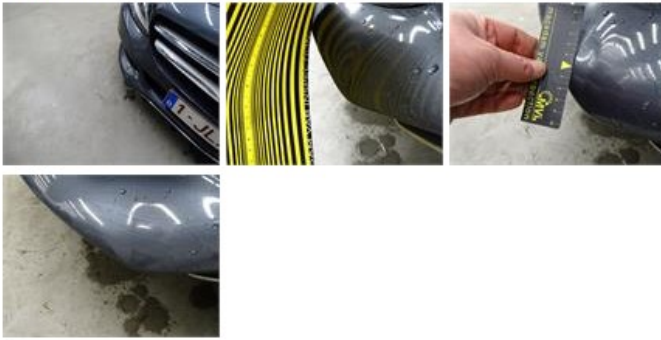
Repair kit	Yes	Compressor	Yes
------------	------------	------------	------------

Total cost ex VAT	1094,02
Bonnet, Chemical polution, LI - Repair and paint (complete)	290,08



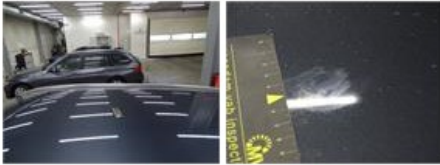
Bumper F, Dent(s), LI - Repair and paint (complete)

211,80



Roof, Chemical polution, LI - Repair and paint (complete)

481,50



Rearview mirror housing L, Scratch(es), Smart repair

110,64

