



**VOLKSWAGEN Crafter 50 Extra-lang verhoogd: 1DJH901**

Vinnumber:	<b>WV1ZZZ2EZC6044027</b>	Versionname:	<b>CRAFTER 50 B/F 5.0T XLWB HR 163PK Specim</b>
First Registrationdate:	<b>1/06/2012</b>	Fiscalpower:	
Expertise Mileage:	<b>146886</b>	Power Kw:	<b>120</b>
Bodytype:	<b>Transporter</b>	Body color:	<b>Grey</b>
Gearbox:	<b>MAN 6 VIT</b>	Paint type:	<b>Metalic</b>
Transmission:		Rims summer:	<b>Steel</b>
Fueltype:	<b>Diesel</b>	Oil level:	<b>OK</b>
Battery functioning:	<b>Yes</b>	Parking lot:	<b>LCV23</b>
Number of doors:	<b>5</b>		
Number of seats:	<b>3</b>		
Number head rests:	<b>3</b>		
Rims summer:	<b>Steel</b>		
Category:	<b>Light Commercial Vehicle</b>		
Oil level:	<b>OK</b>		

**Options**

Windows electric F		Central consol F	
Type of headlighting	<b>Headlighting Halogen</b>	Type of Tow bar	<b>Tow bar fixed</b>
Type of GPS	<b>No GPS</b>		
Type of Lining	<b>Lining fabrics</b>		
Type of climate control	<b>Manual climate control</b>		

**Limited Technical Inspection**

Airco functioning	<b>OK</b>	Battery functioning	<b>Yes</b>
Tires wear profile	<b>OK</b>	Power steering	<b>Yes</b>
Idle position	<b>OK</b>	Sound engine	<b>OK</b>
Engine startingtime	<b>OK</b>	Clutch test	<b>OK</b>
Exhaust gass	<b>OK</b>	Wiper fluid level	<b>OK</b>
Handbrake	<b>OK</b>	Transmission	<b>OK</b>
		Lighting	<b>OK</b>
		Wiperblades	<b>OK</b>

**Degree of wear**

<b>195/75/16/107 R Steel</b>				
Summer tyres:	Fr.L.	<b>Continental: 8 mm</b>	Fr.R.	<b>Continental: 8 mm</b>
	Re.L.	<b>Continental: 4 mm</b>	Re.R.	<b>Continental: 4 mm</b>

**Assistance equipment**

Spare wheel	<b>Yes</b>
-------------	------------

Total cost ex VAT	<b>1482,69</b>
-------------------	----------------

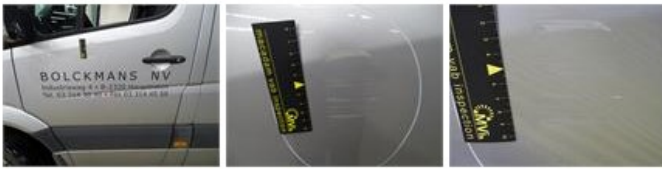
Wing F L, Dent(s), LI - Repair and paint (complete)	<b>165,13</b>
---	---------------



Wing F R, Dent(s) and scratch(es), LI - Repair and paint (complete)	<b>165,13</b>
---	---------------



Door F L, Dent(s) and scratch(es), LI - Repair and paint (complete) 238,76



Bodywork, Not original part, Acceptable 0,00

*No pictures to display*

Door R R, Dent(s) and scratch(es), LI - Repair and paint (complete) 238,76



Bumper F, Scratch(es), Smart repair 110,64



Bonnet, Dent(s) and scratch(es), LI - Repair and paint (complete) 217,56



Trunk door R R, Dent(s) and scratch(es), It - Spot repair 115,56



Wing R R, Dent(s) and scratch(es), LI - Repair and paint (complete) 231,15



