



RENAULT MEGANE GRANDTOUR: 1GKF384

| | | | |
|------------------------------------|--------------------------|--------------|---------------|
| Vinnumber: | VF1KZ140650272964 | Versionname: | DCI |
| First Registrationdate: | 3/03/2014 | Fiscalpower: | |
| Expertise Mileage: | 97352 | Power Kw: | 81 |
| Bodytype: | | Body color: | White |
| Gearbox: | MAN 6 VIT | Paint type: | Opaque |
| Transmission: | Front | Rims summer: | Steel |
| Fueltype: | Diesel | Oil level: | OK |
| Maintenance: | NOT OK | Parking lot: | 3733 |
| Battery functioning: | Yes | | |
| Number of doors: | 5 | | |
| Number of seats: | 5 | | |
| Number head rests: | 5 | | |
| Rims summer: | Steel | | |
| Category: | Passenger Car | | |
| Oil level: | OK | | |
| Registration Certificate Car (BE): | Yes | | |

Options

| | | |
|--------------------------------|------------------------------|------------------|
| Radio CD | | Central consol F |
| GPS storage | | Luggage cover |
| GPS storage | SD | |
| Windows electric F | | |
| Windows electric R | | |
| Cruise Control | | |
| Steering wheel multifunctional | | |
| Radio multimedia | | |
| Type of headlighting | Headlighting Halogen | |
| Type of GPS | GPS big screen color | |
| Type of Lining | Lining fabrics | |
| Type of climate control | Autom climate control | |

Limited Technical Inspection

| | | | |
|---------------------|-----------|---------------------|------------|
| Airco functioning | OK | Battery functioning | Yes |
| Tires wear profile | OK | Power steering | Yes |
| Idle position | OK | Sound engine | OK |
| Engine startingtime | OK | Clutch test | OK |
| Exhaust gass | OK | Wiper fluid level | OK |
| Handbrake | OK | Transmission | OK |
| | | Lighting | OK |
| | | Wiperblades | OK |

Degree of wear

| | | | | |
|-----------------------------|-------|------------------------|-------|------------------------|
| 205/55/16/91 H Steel | | | | |
| Summer tyres: | Fr.L. | Firestone: 6 mm | Fr.R. | Firestone: 6 mm |
| | Re.L. | Goodyear: 5 mm | Re.R. | Goodyear: 5 mm |

Assistance equipment

| | | | |
|-------------|------------|------|------------|
| Spare wheel | Yes | Jack | Yes |
|-------------|------------|------|------------|

| | |
|-------------------|---------------|
| Total cost ex VAT | 911,81 |
|-------------------|---------------|

| | |
|---------------------------|--------------|
| Bodywork, Dirty, Cleaning | 25,00 |
|---------------------------|--------------|



Door F L, Dent(s), Acceptable 0,00

No pictures to display

Molding trunk, Scratch(es), It - Spot repair 115,56



Maintenance, Maintenance, Execute 0,00



Bodywork, Not original part, Remove lettering 0,00



Bumper R, Scratch(es), Acceptable 0,00

No pictures to display

Bumper corner R R, Scratch(es), It - Spot repair 115,56



Bumper F, Scratch(es), Acceptable 0,00

No pictures to display

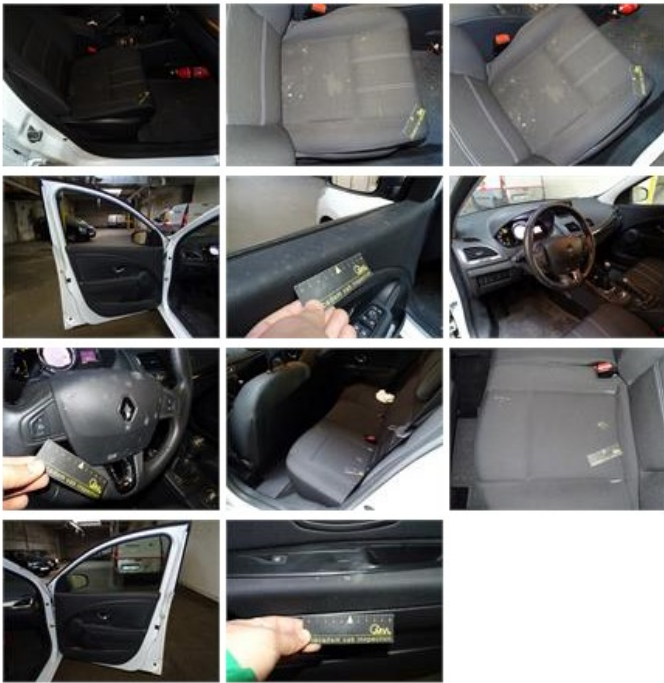
MOT Certificate, Missing, P - Check 0,00



Bonnet, Dent(s), LI - Repair and paint (complete) 338,08



Interior, Stain, Cleaning 50,00



| | |
|--|------|
| Wheel cover F R, Scratch(es), Acceptable | 0,00 |
|--|------|

No pictures to display

| | |
|--|--------|
| Bumper corner R L, Dent(s) and scratch(es), Le - Replace and paint | 267,61 |
|--|--------|

