


**TOYOTA GRAND PRIUS+: 1PPA223**

Vinnumber:	<b>JTDZS3EUX0J010446</b>	Versionname:	<b>1.8 VVT-i Hybrid Comfort</b>
First Registrationdate:	<b>18/08/2016</b>	Fiscalpower:	
Expertise Mileage:	<b>102998</b>	Power Kw:	<b>100</b>
Bodytype:		Body color:	<b>White</b>
Gearbox:	<b>Automatic</b>	Paint type:	<b>Opaque</b>
Transmission:	<b>Front</b>	Rims summer:	<b>Aluminium</b>
Fueltype:	<b>Hybrid Petrol</b>	Oil level:	<b>OK</b>
Maintenance:	<b>OK</b>	Parking lot:	<b>3711</b>
Maintenance:	<b>P CONTROLEREN</b>		
Battery functioning:	<b>Yes</b>		
Number of doors:	<b>5</b>		
Number of seats:	<b>7</b>		
Number head rests:	<b>7</b>		
Rims summer:	<b>Aluminium</b>		
Category:	<b>Passenger Car</b>		
Oil level:	<b>OK</b>		
Registration Certificate Car (BE):	<b>Yes</b>		

**Options**

GPS storage		Panoramic roof	
GPS storage	<b>HD</b>	Central consol F	
Windows electric F		Luggage cover	
Windows electric R		Front parking sensors	
Cruise Control		Rear parking sensors	
Steering wheel multifunctional		Type of Tow bar	<b>No Tow bar</b>
Seats F heated			
Radio multimedia			
Type of headlighting	<b>Headlighting LED</b>		
Type of GPS	<b>GPS big screen color</b>		
Type of Lining	<b>Lining fabrics</b>		
Type of climate control	<b>Autom climate control</b>		

**Limited Technical Inspection**

Airco functioning	<b>OK</b>	Battery functioning	<b>Yes</b>
Tires wear profile	<b>OK</b>	Power steering	<b>Yes</b>
Idle position	<b>OK</b>	Sound engine	<b>OK</b>
Engine startingtime	<b>OK</b>	Clutch test	<b>OK</b>
Exhaust gass	<b>OK</b>	Wiper fluid level	<b>OK</b>
Handbrake	<b>OK</b>	Transmission	<b>OK</b>
		Lighting	<b>OK</b>
		Wiperblades	<b>OK</b>

**Degree of wear**

<b>205/60/16/96 H LightMetal</b>				
Winter tyres:	Fr.L.	<b>Bridgestone: 5 mm</b>	Fr.R.	<b>Bridgestone: 5 mm</b>
	Re.L.	<b>Bridgestone: 5 mm</b>	Re.R.	<b>Bridgestone: 5 mm</b>

**Assistance equipment**

Emergency spare wheel	<b>Yes</b>	Jack	<b>Yes</b>
-----------------------	------------	------	------------

Total cost ex VAT 506,99

Trunk lid covering R, Scratch(es), Smart repair 110,64



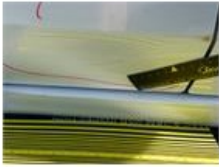
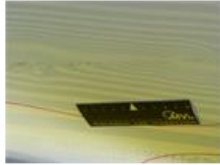
Door R L, Dent(s), Acceptable	0,00
-------------------------------	------

*No pictures to display*

Wheel cover F R, Missing, E - Replace	30,00
---------------------------------------	-------



Door R R, Dent(s) and scratch(es), LI - Repair and paint (complete)	366,35
---	--------



Bumper R, Scratch(es), Acceptable	0,00
-----------------------------------	------

*No pictures to display*