


PEUGEOT 308: 1HZV985

Vinnumber:	VF3LCBHXHES250747	Versionname:	308 SW BlueHDi Allure STT 116PK
First Registrationdate:	12/11/2014	Fiscalpower:	
Expertise Mileage:	159704	Power Kw:	85
Bodytype:		Body color:	Silver
Gearbox:	MAN 6 VIT	Paint type:	Metalic
Transmission:	Front	Rims summer:	Aluminium
Fueltype:	Diesel	Oil level:	OK
Battery functioning:	Yes	Parking lot:	3327
Number of doors:	5		
Number of seats:	5		
Number head rests:	5		
Rims summer:	Aluminium		
Category:	Passenger Car		
Oil level:	OK		
Registration Certificate Car (BE):	Yes		

Options

Windows electric F	Central consol F	
Windows electric R	Front parking sensors	
Cruise Control	Rear parking sensors	
Steering wheel multifunctional	Type of Tow bar	Tow bar fixed
Radio multimedia		
Type of headlighting	Headlighting LED	
Type of GPS	GPS big screen color	
Type of Lining	Lining fabrics	
Type of climate control	Autom climate control	

Limited Technical Inspection

Airco functioning	OK	Battery functioning	Yes
Tires wear profile	OK	Power steering	Yes
Idle position	OK	Sound engine	OK
Engine startingtime	OK	Clutch test	OK
Exhaust gass	OK	Wiper fluid level	OK
Handbrake	OK	Transmission	OK
		Lighting	OK
		Wiperblades	OK

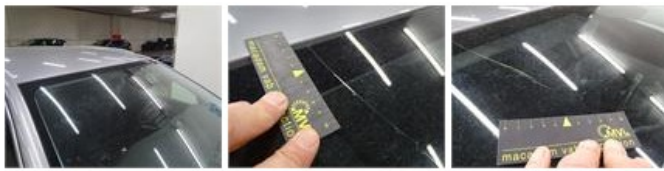
Degree of wear

	205/55/16/91 T LightMetal			
Winter tyres:	Fr.L.	Goodyear: 3 mm	Fr.R.	Goodyear: 3 mm
	Re.L.	Goodyear: 4 mm	Re.R.	Goodyear: 4 mm

Assistance equipment

Emergency spare wheel	Yes	Jack	Yes
Number of charging cables (normal)	0		
Number of charging cables (rapid charge)	0		

Total cost ex VAT	766,50
Rear window, Scratch(es), Acceptable	0,00
<i>No pictures to display</i>	
Windscreen, Crack, E - Replace	0,00



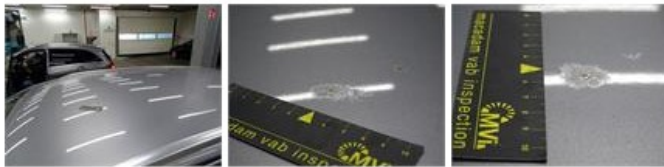
Alloy rim R R polished, Scratch(es), LI - Repair and paint (complete) 95,00



Bumper R, Scratch(es), Acceptable 0,00

No pictures to display

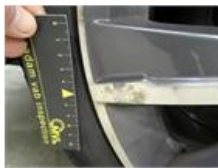
Roof, Chemical pollution, LI - Repair and paint (complete) 481,50



Bonnet, Stone chip(s), Acceptable 0,00

No pictures to display

Alloy rim F L polished, Scratch(es), LI - Repair and paint (complete) 95,00



Alloy rim F R polished, Scratch(es), Acceptable 0,00

No pictures to display

Alloy rim R L polished, Scratch(es), LI - Repair and paint (complete) 95,00

