



PEUGEOT 508: 1GPJ309

Vinnumber:	VF38E9HD8EL012486	Versionname:	508 SW e-HDi Active STT 115PK
First Registrationdate:	25/03/2014	Fiscalpower:	
Expertise Mileage:	118206	Power Kw:	84
Bodytype:	Break	Body color:	Dark Blue
Gearbox:	MAN 6 VIT	Paint type:	Metalic
Transmission:		Rims summer:	Aluminium
Fueltype:	Diesel	Oil level:	OK
Battery functioning:	Yes	Parking lot:	2313
Number of doors:	5		
Number of seats:	5		
Number head rests:	5		
Rims summer:	Aluminium		
Category:	Passenger Car		
Oil level:	OK		
Registration Certificate Car (BE):	Yes		

Options

Radio CD		Panoramic roof	
Windows electric F		Central consol F	
Windows electric R		Luggage cover	
Cruise Control		Front parking sensors	
Steering wheel multifunctional		Rear parking sensors	
Type of headlighting	Headlighting Halogen	Type of Tow bar	No Tow bar
Type of GPS	No GPS		
Type of Lining	Lining fabrics		
Type of climate control	Autom climate control		

Limited Technical Inspection

Airco functioning	OK	Battery functioning	Yes
Tires wear profile	OK	Power steering	Yes
Idle position	OK	Sound engine	OK
Engine startingtime	OK	Clutch test	OK
Exhaust gass	OK	Wiper fluid level	OK
Handbrake	OK	Transmission	OK
		Lighting	OK
		Wiperblades	OK

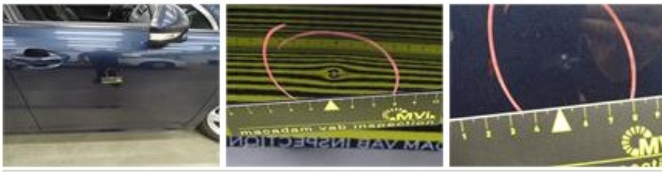
Degree of wear

215/60/16/95 H LightMetal				
Summer tyres:	Fr.L.	Michelin: 5 mm	Fr.R.	Michelin: 5 mm
	Re.L.	Michelin: 3 mm	Re.R.	Michelin: 3 mm

Assistance equipment

Spare wheel	Yes	Jack	Yes
-------------	------------	------	------------

Total cost ex VAT	530,15
Door R L, Scratch(es), Acceptable	0,00
<i>No pictures to display</i>	
Door F R, Dent(s) and scratch(es), LI - Repair and paint (complete)	318,35



Bonnet, Stone chip(s), Acceptable 0,00

No pictures to display

Bumper R, Scratch(es), LI - Repair and paint (complete) 211,80

