



**BMW 5: 1WDA494**

|                                    |                          |              |                                   |
|------------------------------------|--------------------------|--------------|-----------------------------------|
| Vinnumber:                         | <b>WBA5L11010D968681</b> | Versionname: | <b>5 TOURING 518dA 150PK Aut.</b> |
| First Registrationdate:            | <b>1/01/2020</b>         | Fiscalpower: |                                   |
| Expertise Mileage:                 | <b>71343</b>             | Power Kw:    | <b>110</b>                        |
| Bodytype:                          | <b>Break</b>             | Body color:  | <b>Dark Brown</b>                 |
| Gearbox:                           | <b>Automatic</b>         | Paint type:  | <b>Metalic</b>                    |
| Transmission:                      |                          | Rims summer: | <b>Aluminium</b>                  |
| Fueltype:                          | <b>Diesel</b>            | Oil level:   | <b>OK</b>                         |
| Battery functioning:               | <b>Yes</b>               | Parking lot: | <b>2322</b>                       |
| Number of doors:                   | <b>5</b>                 |              |                                   |
| Number of seats:                   | <b>5</b>                 |              |                                   |
| Number head rests:                 | <b>5</b>                 |              |                                   |
| Rims summer:                       | <b>Aluminium</b>         |              |                                   |
| Category:                          | <b>Passenger Car</b>     |              |                                   |
| Oil level:                         | <b>OK</b>                |              |                                   |
| Registration Certificate Car (BE): | <b>No</b>                |              |                                   |

**Options**

|                                |                              |
|--------------------------------|------------------------------|
| Radio CD                       | Central consol F             |
| Windows electric F             | Luggage cover                |
| Windows electric R             | Front parking sensors        |
| Cruise Control                 | Rear parking sensors         |
| Steering wheel multifunctional | Type of Tow bar              |
| Seats F heated                 | <b>No Tow bar</b>            |
| Radio multimedia               |                              |
| Type of headlighting           | <b>Headlighting Halogen</b>  |
| Type of GPS                    | <b>GPS big screen color</b>  |
| Type of Lining                 | <b>Lining leather</b>        |
| Type of climate control        | <b>Autom climate control</b> |

**Limited Technical Inspection**

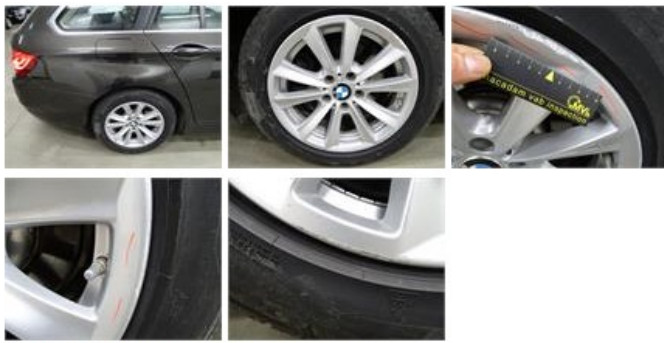
|                     |           |                     |            |
|---------------------|-----------|---------------------|------------|
| Airco functioning   | <b>OK</b> | Battery functioning | <b>Yes</b> |
| Tires wear profile  | <b>OK</b> | Power steering      | <b>Yes</b> |
| Idle position       | <b>OK</b> | Sound engine        | <b>OK</b>  |
| Engine startingtime | <b>OK</b> | Clutch test         | <b>OK</b>  |
| Exhaust gass        | <b>OK</b> | Wiper fluid level   | <b>OK</b>  |
| Handbrake           | <b>OK</b> | Transmission        | <b>OK</b>  |
|                     |           | Lighting            | <b>OK</b>  |
|                     |           | Wiperblades         | <b>OK</b>  |

**Degree of wear**

|               |                                  |                      |       |                      |
|---------------|----------------------------------|----------------------|-------|----------------------|
|               | <b>225/55/17/97 H LightMetal</b> |                      |       |                      |
| Winter tyres: | Fr.L.                            | <b>Pirelli: 5 mm</b> | Fr.R. | <b>Pirelli: 5 mm</b> |
|               | Re.L.                            | <b>Pirelli: 4 mm</b> | Re.R. | <b>Pirelli: 4 mm</b> |

**Assistance equipment**

|  |            |            |                |
|--|------------|------------|----------------|
| Repair kit   | <b>Yes</b> | Compressor | <b>Yes</b>     |
| Total cost ex VAT  |            |            | <b>1623,18</b> |
| Alloy rim R R, Scratch(es), LI - Repair and paint (complete) |            |            | <b>95,00</b>   |



Registration Document, Missing, E - Replace 150,00

No pictures to display

Door R L, Scratch(es), LI - Repair and paint (complete) 382,02



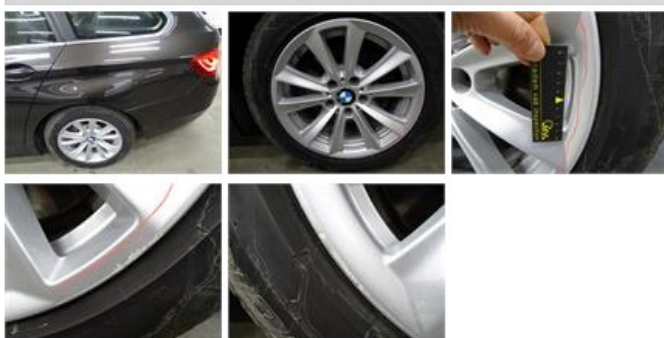
Bumper F, Scratch(es), LI - Repair and paint (complete) 254,16



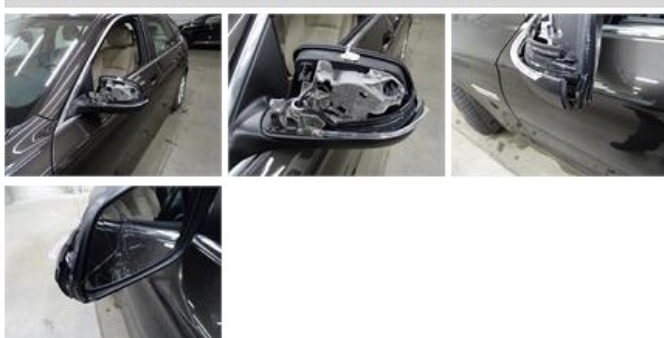
Alloy rim F L, Scratch(es), LI - Repair and paint (complete) 95,00



Alloy rim R L, Scratch(es), LI - Repair and paint (complete) 95,00



Rearview mirror L complete, Broken, Le - Replace and paint 307,00



Certificate Of Conformity, Missing, E - Replace 150,00

