



RENAULT CLIO: 1KBA415

Vinnumber:	VF15RJL0H52519221	Versionname:	1.5 ENERGY DCI 90E EXPRESSION
First Registrationdate:	23/03/2015	Fiscalpower:	
Expertise Mileage:	76343	Power Kw:	66
Bodytype:	Hatchback	Body color:	Silver
Gearbox:	MAN 5 VIT	Paint type:	Metalic
Transmission:	Front	Rims summer:	Steel
Fueltype:	Diesel	Oil level:	OK
Battery functioning:	Yes	Parking lot:	2820
Number of doors:	5		
Number of seats:	5		
Number head rests:	5		
Rims summer:	Steel		
Category:	Passenger Car		
Oil level:	OK		
Registration Certificate Car (BE):	Yes		

Options

Windows electric F	Luggage cover
Cruise Control	Rear parking sensors
Steering wheel multifunctional	Type of Tow bar
Radio multimedia	No Tow bar
Type of headlighting	Headlighting Halogen
Type of GPS	GPS big screen color
Type of Lining	Lining fabrics
Type of climate control	Manual climate control

Limited Technical Inspection

Airco functioning	OK	Battery functioning	Yes
Tires wear profile	OK	Power steering	Yes
Idle position	OK	Sound engine	OK
Engine startingtime	OK	Clutch test	OK
Exhaust gass	OK	Wiper fluid level	OK
Handbrake	OK	Transmission	OK
		Lighting	OK
		Wiperblades	OK

Degree of wear

	185/65/15/92 T Steel			
Summer tyres:	Fr.L.	Michelin: 4 mm	Fr.R.	Michelin: 4 mm
	Re.L.	Michelin: 5 mm	Re.R.	Michelin: 5 mm

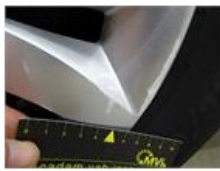
Assistance equipment

Repair kit	Yes	Compressor	Yes
Number of charging cables (normal)	0		
Number of charging cables (rapid charge)	0		

Total cost ex VAT 417,58

Wheel cover R R, Scratch(es), E - Replace 24,00





Wheel cover F R, Scratch(es), E - Replace

24,00



Door R R, Bad repair, Acceptable

0,00

No pictures to display

Wheel cover F L, Scratch(es), E - Replace

24,00



Wing F L, Scratch(es), LI - Repair and paint (complete)

176,14



Rocker panel inner R R, Dent(s), Acceptable

0,00

No pictures to display

Bumper F, Scratch(es), LI - Repair and paint (complete)

169,44



Bonnet, Dent(s), Acceptable

0,00

No pictures to display

Door F L, Scratch(es), Acceptable

0,00

No pictures to display